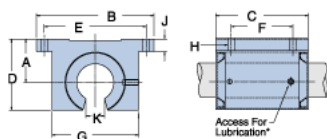
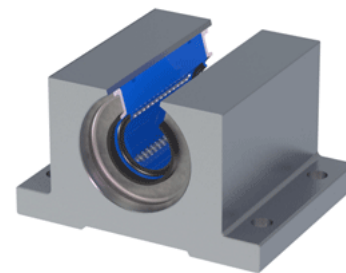


Excel XEP-10-OPN

Call 800-321-7800 or visit us online at www.nookindustries.com to configure and order your Excel XEP-10-OPN today!



* Lubrication holes for blocks up to 1/2" have flush lube fitting; 5/8" and above are 1/4" - 28 tapped hole with set screw

Product Info

Nominal Shaft Diameter [in]	5/8
Part Number	XEP-10-OPN

Dimensions

A +/-0.001 [in]	0.875
B [in]	2 1/2
C [in]	1 3/4
D [in]	1 7/16
E +/-0.005 [in]	2.125
F +/-0.005 [in]	1.125
G [in]	1 3/4
J [in]	9/32
K [in]	3/8
H - Bolt	#8
H - Hole [in]	0.19

Weight

Weight [lb]	0.4
-------------	-----

Performance Specifications

Dynamic Load Maximum [lb]	318
Dynamic Load Normal [lb]	315
Static Load Maximum [lb]	236
Static Load Normal [lb]	229