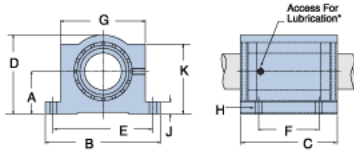
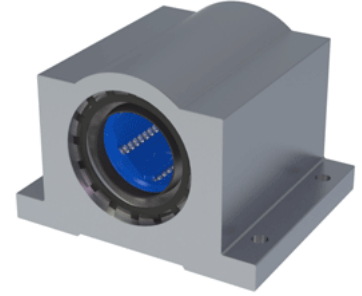


Excel XEP-24

Call 800-321-7800 or visit us online at www.nookindustries.com to configure and order your Excel XEP-24 today!



* Lubrication holes for blocks up to 1/2" have flush lube fitting; 5/8" and above are 1/4 - 28 tapped hole with set screw

Product Info

| | |
|-----------------------------|--------|
| Nominal Shaft Diameter [in] | 1 1/2 |
| Part Number | XEP-24 |

Dimensions

| | |
|-----------------|-------|
| A +/-0.001 [in] | 1.750 |
| B [in] | 4 3/4 |
| C [in] | 4 |
| D [in] | 3 1/4 |
| E +/-0.005 [in] | 4.125 |
| F +/-0.005 [in] | 2.500 |
| G [in] | 3 1/2 |
| J [in] | 1/2 |
| K [in] | 2 7/8 |
| H - Bolt | 1/4" |
| H - Hole [in] | 0.28 |

Weight

| | |
|-------------|-----|
| Weight [lb] | 3.8 |
|-------------|-----|

Performance Specifications

| | |
|---------------------------|------|
| Dynamic Load Maximum [lb] | 1376 |
| Dynamic Load Normal [lb] | 1298 |
| Static Load Maximum [lb] | 1091 |
| Static Load Normal [lb] | 852 |