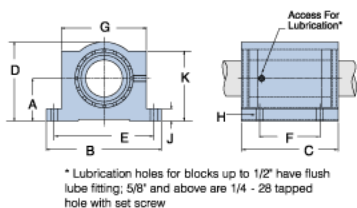
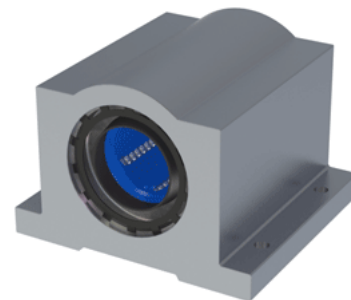


Excel XEP-20

Call 800-321-7800 or visit us online at www.nookindustries.com to configure and order your Excel XEP-20 today!



Product Info

Nominal Shaft Diameter [in]	1 1/4
Part Number	XEP-20

Dimensions

A +/-0.001 [in]	1.500
B [in]	4
C [in]	3 5/8
D [in]	2 13/16
E +/-0.005 [in]	3.500
F +/-0.005 [in]	2.000
G [in]	3
J [in]	7/16
K [in]	2 1/2
H - Bolt	#10
H - Hole [in]	0.22

Weight

Weight [lb]	2.5
-------------	-----

Performance Specifications

Dynamic Load Maximum [lb]	1078
Dynamic Load Normal [lb]	1017
Static Load Maximum [lb]	911
Static Load Normal [lb]	712