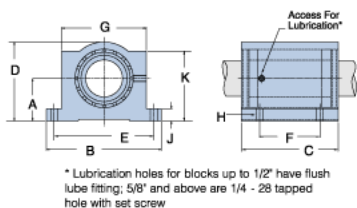
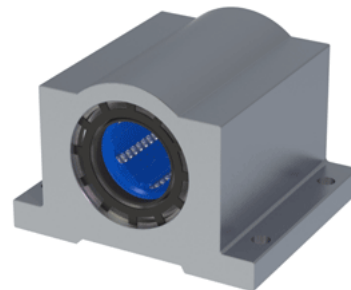


## Excel XEP-16

Call 800-321-7800 or visit us online at [www.nookindustries.com](http://www.nookindustries.com) to configure and order your Excel XEP-16 today!



### Product Info

Nominal Shaft Diameter [in]	1
Part Number	XEP-16

### Dimensions

A +/-0.001 [in]	1.187
B [in]	3 1/4
C [in]	2 13/16
D [in]	2 3/16
E +/-0.005 [in]	2.875
F +/-0.005 [in]	1.750
G [in]	2 3/8
J [in]	3/8
K [in]	1 15/16
H - Bolt	#10
H - Hole [in]	0.22

### Weight

Weight [lb]	1.2
-------------	-----

### Performance Specifications

Dynamic Load Maximum [lb]	725
Dynamic Load Normal [lb]	684
Static Load Maximum [lb]	630
Static Load Normal [lb]	492