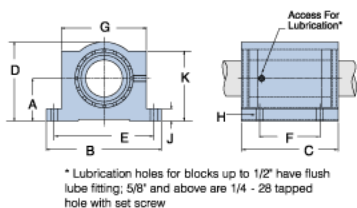
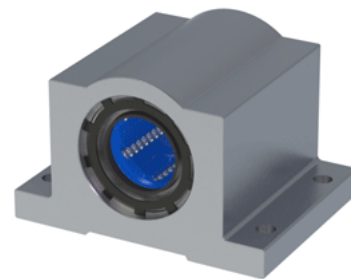


## Excel XEP-12

Call 800-321-7800 or visit us online at [www.nookindustries.com](http://www.nookindustries.com) to configure and order your Excel XEP-12 today!



### Product Info

Nominal Shaft Diameter [in]	3/4
Part Number	XEP-12

### Dimensions

A +/-0.001 [in]	0.937
B [in]	2 3/4
C [in]	2 1/16
D [in]	1 3/4
E +/-0.005 [in]	2.375
F +/-0.005 [in]	1.250
G [in]	1 7/8
J [in]	5/16
K [in]	1 9/16
H - Bolt	#8
H - Hole [in]	0.19

### Weight

Weight [lb]	0.6
-------------	-----

### Performance Specifications

Dynamic Load Maximum [lb]	406
Dynamic Load Normal [lb]	383
Static Load Maximum [lb]	351
Static Load Normal [lb]	274