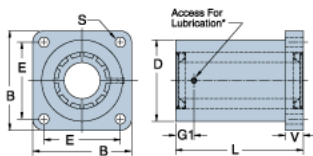
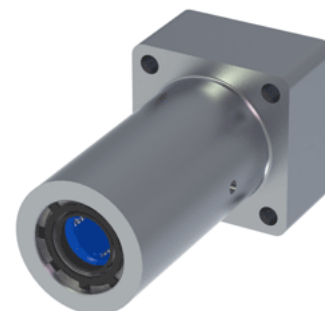


Excel TEP-08-FLM

Call 800-321-7800 or visit us online at www.nookindustries.com to configure and order your Excel TEP-08-FLM today!



Product Info

Nominal Shaft Diameter [in]	1/2
Part Number	TEP-08-FLM

Dimensions

B [in]	1.63
D [in]	1.25
E +/-0.005 [in]	1.250
G1 [in]	1.60
L [in]	3.20
V [in]	0.90
S Hole Dia. [in]	0.19

Performance Specifications

Dynamic Load Maximum [lb]	350
Dynamic Load Normal [lb]	304
Static Load Maximum [lb]	316
Static Load Normal [lb]	224