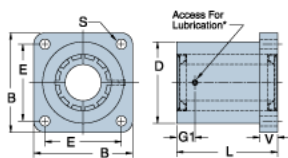
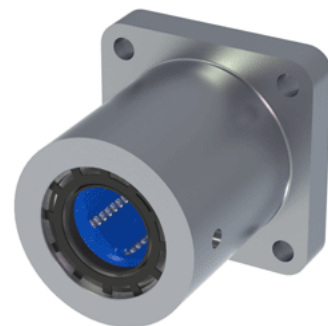


Excel XEP-16-FLM

Call 800-321-7800 or visit us online at www.nookindustries.com to configure and order your Excel XEP-16-FLM today!



Product Info

Nominal Shaft Diameter [in]	1
Part Number	XEP-16-FLM

Dimensions

B [in]	2.75
D [in]	2.25
E +/-0.005 [in]	2.125
G1 [in]	0.51
L [in]	2.81
V [in]	0.50
S Hole Dia. [in]	0.28

Performance Specifications

Dynamic Load Maximum [lb]	725
Dynamic Load Normal [lb]	684
Static Load Maximum [lb]	630
Static Load Normal [lb]	492