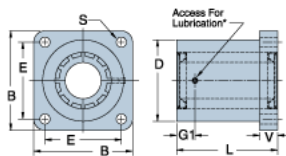
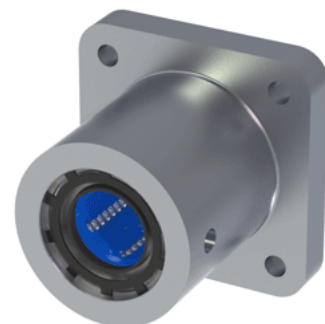


Excel XEP-12-FLM

Call 800-321-7800 or visit us online at www.nookindustries.com to configure and order your Excel XEP-12-FLM today!



Product Info

Nominal Shaft Diameter [in]	3/4
Part Number	XEP-12-FLM

Dimensions

B [in]	2.38
D [in]	1.75
E +/-0.005 [in]	1.750
G1 [in]	0.37
L [in]	2.06
V [in]	0.38
S Hole Dia. [in]	0.22

Performance Specifications

Dynamic Load Maximum [lb]	406
Dynamic Load Normal [lb]	383
Static Load Maximum [lb]	351
Static Load Normal [lb]	274