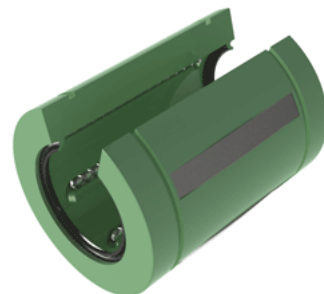
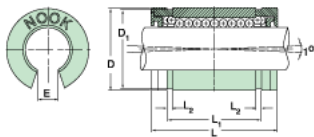


Excel XLMN40UU

Call 800-321-7800 or visit us online at www.nookindustries.com to configure and order your Excel XLMN40UU today!



Product Info

Nominal Shaft Diameter [mm]	40
Part Number	XLMN40UU

Dimensions

D1 [mm]	59
E [mm]	19.5
L [mm]	80
L1 [mm]	60.4
L2 [mm]	2.2
Housing Bore Diameter D Maximum [mm]	32.15
Housing Bore Diameter D Minimum [mm]	62.05

Performance Specifications

Number of Ball Circuits	5
Dynamic Load C [N]	5720
Static Load C [N]	5100