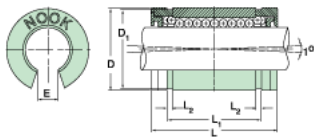
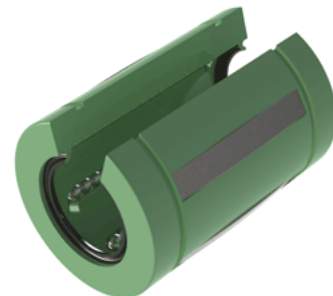


Excel XLMN25UU

Call 800-321-7800 or visit us online at www.nookindustries.com to configure and order your Excel XLMN25UU today!



Product Info

Nominal Shaft Diameter [mm]	25
Part Number	XLMN25UU

Dimensions

D1 [mm]	38
E [mm]	11.5
L [mm]	58
L1 [mm]	43.8
L2 [mm]	1.9
Housing Bore Diameter D Maximum [mm]	40.10
Housing Bore Diameter D Minimum [mm]	40.05

Performance Specifications

Number of Ball Circuits	5
Dynamic Load C [N]	2600
Static Load C [N]	1290