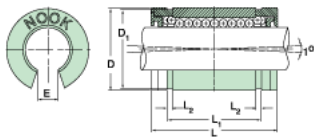
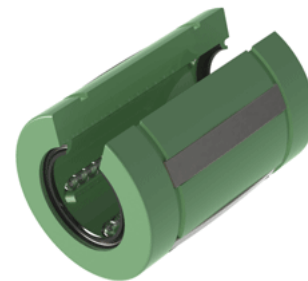


Excel XLMN20UU

Call 800-321-7800 or visit us online at www.nookindustries.com to configure and order your Excel XLMN20UU today!



Product Info

Nominal Shaft Diameter [mm]	20
Part Number	XLMN20UU

Dimensions

D1 [mm]	30.3
E [mm]	9
L [mm]	45
L1 [mm]	31.3
L2 [mm]	1.65
Housing Bore Diameter D Maximum [mm]	32.10
Housing Bore Diameter D Minimum [mm]	32.05

Performance Specifications

Number of Ball Circuits	5
Dynamic Load C [N]	1560
Static Load C [N]	1300