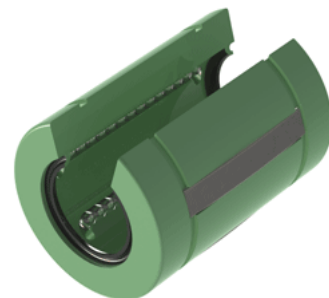
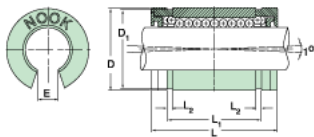


## Excel XLMN16UU

Call 800-321-7800 or visit us online at [www.nookindustries.com](http://www.nookindustries.com) to configure and order your Excel XLMN16UU today!



### Product Info

Nominal Shaft Diameter [mm]	16
Part Number	XLMN16UU

### Dimensions

D1 [mm]	24.9
E [mm]	9
L [mm]	36
L1 [mm]	24.7
L2 [mm]	1.35
Housing Bore Diameter D Maximum [mm]	26.10
Housing Bore Diameter D Minimum [mm]	26.03

### Performance Specifications

Number of Ball Circuits	4
Dynamic Load C [N]	920
Static Load C [N]	730