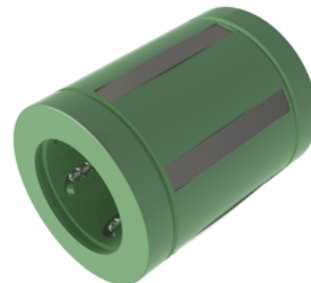
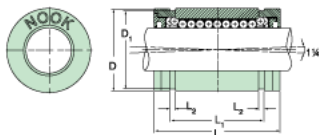


## Excel XLMC40

Call 800-321-7800 or visit us online at [www.nookindustries.com](http://www.nookindustries.com) to configure and order your Excel XLMC40 today!



### Product Info

|                             |        |
|-----------------------------|--------|
| Nominal Shaft Diameter [mm] | 40     |
| Part Number                 | XLMC40 |

### Dimensions

|                                      |       |
|--------------------------------------|-------|
| D1 [mm]                              | 59    |
| L [mm]                               | 80    |
| L1 [mm]                              | 60.4  |
| L2 [mm]                              | 2.2   |
| Housing Bore Diameter D Maximum [mm] | 62.15 |
| Housing Bore Diameter D Minimum [mm] | 62.05 |

### Performance Specifications

|                            |      |
|----------------------------|------|
| Number of Ball Circuits    | 5    |
| Dynamic Load C Maximum [N] | 5720 |
| Dynamic Load C Normal [N]  | 5500 |
| Static Load C [N]          | 4900 |