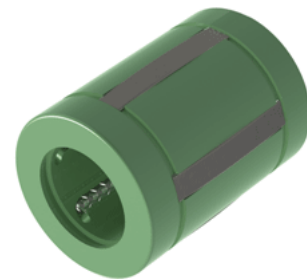
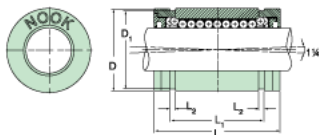


## Excel XLMC16

Call 800-321-7800 or visit us online at [www.nookindustries.com](http://www.nookindustries.com) to configure and order your Excel XLMC16 today!



### Product Info

|                             |        |
|-----------------------------|--------|
| Nominal Shaft Diameter [mm] | 16     |
| Part Number                 | XLMC16 |

### Dimensions

|                                      |       |
|--------------------------------------|-------|
| D1 [mm]                              | 24.9  |
| L [mm]                               | 36    |
| L1 [mm]                              | 24.7  |
| L2 [mm]                              | 1.35  |
| Housing Bore Diameter D Maximum [mm] | 26.10 |
| Housing Bore Diameter D Minimum [mm] | 26.03 |

### Performance Specifications

|                            |     |
|----------------------------|-----|
| Number of Ball Circuits    | 5   |
| Dynamic Load C Maximum [N] | 920 |
| Dynamic Load C Normal [N]  | 800 |
| Static Load C [N]          | 630 |