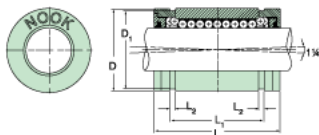
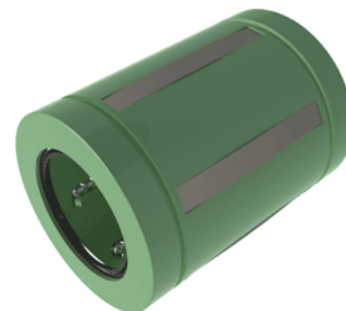


## Excel XLMC50UU

Call 800-321-7800 or visit us online at [www.nookindustries.com](http://www.nookindustries.com) to configure and order your Excel XLMC50UU today!



### Product Info

Nominal Shaft Diameter [mm]	50
Part Number	XLMC50UU

### Dimensions

D1 [mm]	72
L [mm]	100
L1 [mm]	77.4
L2 [mm]	2.7
Housing Bore Diameter D Maximum [mm]	75.20
Housing Bore Diameter D Minimum [mm]	75.05

### Performance Specifications

Number of Ball Circuits	5
Dynamic Load C Maximum [N]	8940
Dynamic Load C Normal [N]	8600
Static Load C [N]	7100