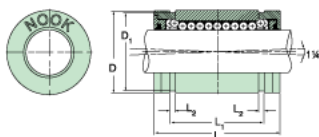
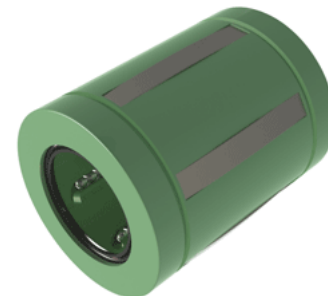


## Excel XLMC40UU

Call 800-321-7800 or visit us online at [www.nookindustries.com](http://www.nookindustries.com) to configure and order your Excel XLMC40UU today!



### Product Info

Nominal Shaft Diameter [mm]	40
Part Number	XLMC40UU

### Dimensions

D1 [mm]	59
L [mm]	80
L1 [mm]	60.4
L2 [mm]	2.2
Housing Bore Diameter D Maximum [mm]	62.15
Housing Bore Diameter D Minimum [mm]	62.05

### Performance Specifications

Number of Ball Circuits	5
Dynamic Load C Maximum [N]	5720
Dynamic Load C Normal [N]	5500
Static Load C [N]	4900