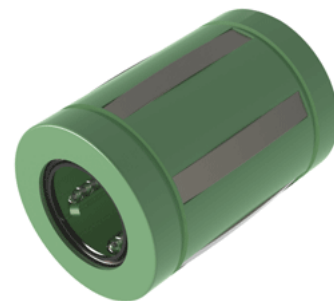
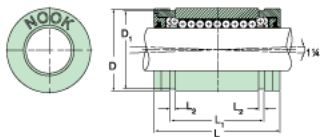


## Excel XLMC25UU

Call 800-321-7800 or visit us online at [www.nookindustries.com](http://www.nookindustries.com) to configure and order your Excel XLMC25UU today!



### Product Info

Nominal Shaft Diameter [mm]	25
Part Number	XLMC25UU

### Dimensions

D1 [mm]	38
L [mm]	58
L1 [mm]	43.8
L2 [mm]	1.9
Housing Bore Diameter D Maximum [mm]	40.10
Housing Bore Diameter D Minimum [mm]	40.05

### Performance Specifications

Number of Ball Circuits	5
Dynamic Load C Maximum [N]	2600
Dynamic Load C Normal [N]	2500
Static Load C [N]	2200