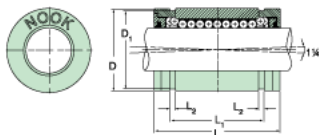
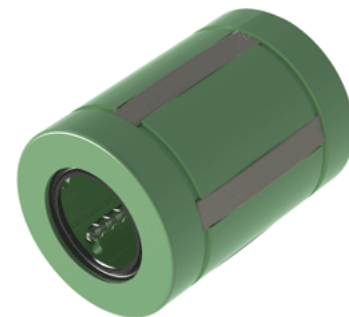


Excel XLMC16UU

Call 800-321-7800 or visit us online at www.nookindustries.com to configure and order your Excel XLMC16UU today!



Product Info

Nominal Shaft Diameter [mm]	16
Part Number	XLMC16UU

Dimensions

D1 [mm]	24.9
L [mm]	36
L1 [mm]	24.7
L2 [mm]	1.35
Housing Bore Diameter D Maximum [mm]	26.10
Housing Bore Diameter D Minimum [mm]	26.03

Performance Specifications

Number of Ball Circuits	5
Dynamic Load C Maximum [N]	920
Dynamic Load C Normal [N]	800
Static Load C [N]	630