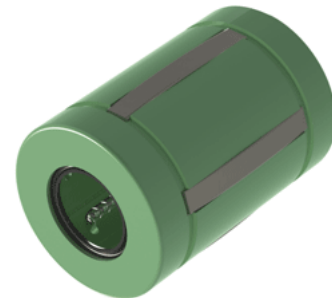
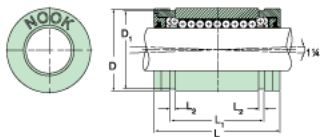


## Excel XLMC12UU

Call 800-321-7800 or visit us online at [www.nookindustries.com](http://www.nookindustries.com) to configure and order your Excel XLMC12UU today!



### Product Info

Nominal Shaft Diameter [mm]	12
Part Number	XLMC12UU

### Dimensions

D1 [mm]	21
L [mm]	32
L1 [mm]	22.7
L2 [mm]	1.35
Housing Bore Diameter D Maximum [mm]	22.08
Housing Bore Diameter D Minimum [mm]	22.03

### Performance Specifications

Number of Ball Circuits	5
Dynamic Load C Maximum [N]	750
Dynamic Load C Normal [N]	650
Static Load C [N]	520