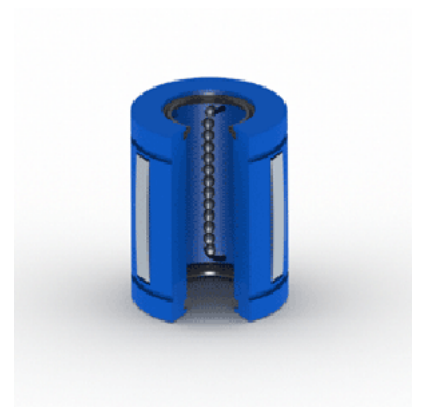
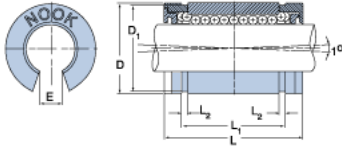


EXCEL XLEN32UU

Call 800-321-7800 or visit us online at www.nookindustries.com to configure and order your EXCEL XLEN32UU today!



Product Info

Nominal Shaft Diameter [in]	2
Part Number	XLEN32UU

Dimensions

D1 [in]	2.8379
E [in]	1.00
L Maximum [in]	3.960
L Minimum [in]	4.000
L1 Maximum [in]	3.163
L1 Minimum [in]	3.193
L2 [in]	0.105
Housing Bore Diameter D Maximum [in]	3.0010
Housing Bore Diameter D Minimum [in]	3.0000

Performance Specifications

Dynamic Load Maximum [lb]	2185
Dynamic Load Normal [lb]	2121
Number of Ball Circuits	5
Static Load Maximum [lb]	1663
Static Load Normal [lb]	1485