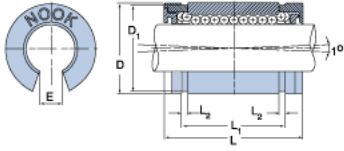
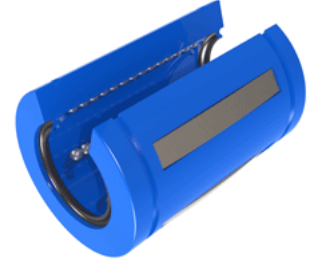


EXCEL XLEN16UU

Call 800-321-7800 or visit us online at www.nookindustries.com to configure and order your EXCEL XLEN16UU today!



Product Info

Nominal Shaft Diameter [in]	1
Part Number	XLEN16UU

Dimensions

D1 [in]	1.4900
E [in]	0.56
L Maximum [in]	2.230
L Minimum [in]	2.250
L1 Maximum [in]	1.864
L1 Minimum [in]	1.884
L2 [in]	0.070
Housing Bore Diameter D Maximum [in]	1.5630
Housing Bore Diameter D Minimum [in]	1.5625

Performance Specifications

Dynamic Load Maximum [lb]	711
Dynamic Load Normal [lb]	690
Number of Ball Circuits	5
Static Load Maximum [lb]	561
Static Load Normal [lb]	501