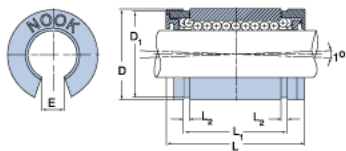
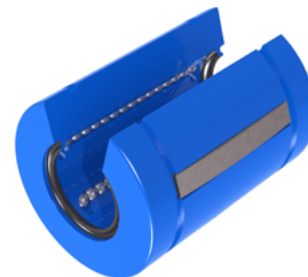


EXCEL XLEN10UU

Call 800-321-7800 or visit us online at www.nookindustries.com to configure and order your EXCEL XLEN10UU today!



Product Info

| | |
|-----------------------------|----------|
| Nominal Shaft Diameter [in] | 5/8 |
| Part Number | XLEN10UU |

Dimensions

| | |
|--------------------------------------|--------|
| D1 [in] | 1.0700 |
| E [in] | 0.38 |
| L Maximum [in] | 1.480 |
| L Minimum [in] | 1.500 |
| L1 Maximum [in] | 1.095 |
| L1 Minimum [in] | 1.105 |
| L2 [in] | 0.056 |
| Housing Bore Diameter D Maximum [in] | 1.1255 |
| Housing Bore Diameter D Minimum [in] | 1.1250 |

Performance Specifications

| | |
|---------------------------|-----|
| Dynamic Load Maximum [lb] | 318 |
| Dynamic Load Normal [lb] | 315 |
| Number of Ball Circuits | 4 |
| Static Load Maximum [lb] | 236 |
| Static Load Normal [lb] | 229 |