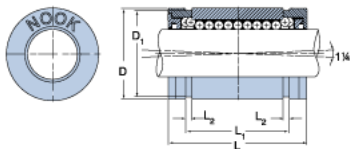
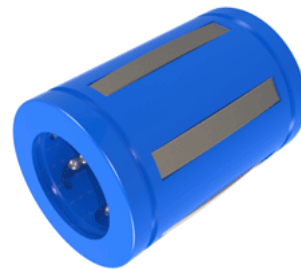


## EXCEL XLEC16

Call 800-321-7800 or visit us online at [www.nookindustries.com](http://www.nookindustries.com) to configure and order your EXCEL XLEC16 today!



### Product Info

Nominal Shaft Diameter [in]	1
Part Number	XLEC16

### Dimensions

D1 [in]	1.4900
L Maximum [in]	2.230
L Minimum [in]	2.250
L1 Maximum [in]	1.864
L1 Minimum [in]	1.884
L2 [in]	0.070
Housing Bore Diameter D Maximum [in]	1.5625
Housing Bore Diameter D Minimum [in]	1.5630

### Performance Specifications

Number of Ball Circuits	6
Dynamic Load Maximum [lb]	725
Dynamic Load Normal [lb]	684
Static Load Maximum [lb]	360
Static Load Normal [lb]	492