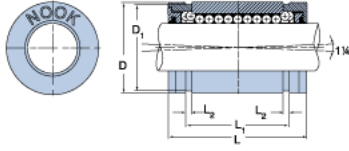
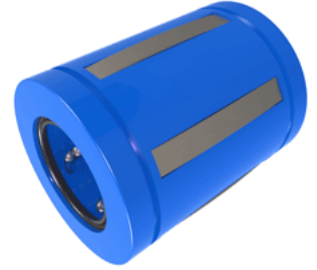


## EXCEL XLEC24UU

Call 800-321-7800 or visit us online at [www.nookindustries.com](http://www.nookindustries.com) to configure and order your EXCEL XLEC24UU today!



### Product Info

Nominal Shaft Diameter [in]	1 1/2
Part Number	XLEC24UU

### Dimensions

D1 [in]	2.2389
L Maximum [in]	2.970
L Minimum [in]	3.000
L1 Maximum [in]	2.390
L1 Minimum [in]	2.410
L2 [in]	0.086
Housing Bore Diameter D Maximum [in]	2.3760
Housing Bore Diameter D Minimum [in]	2.3740

### Performance Specifications

Number of Ball Circuits	6
Dynamic Load Maximum [lb]	1376
Dynamic Load Normal [lb]	1298
Static Load Maximum [lb]	1091
Static Load Normal [lb]	852