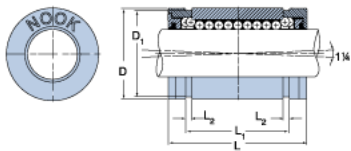
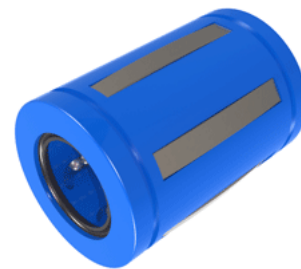


EXCEL XLEC16UU

Call 800-321-7800 or visit us online at www.nookindustries.com to configure and order your EXCEL XLEC16UU today!



Product Info

Nominal Shaft Diameter [in]	1
Part Number	XLEC16UU

Dimensions

D1 [in]	1.4900
L Maximum [in]	2.230
L Minimum [in]	2.250
L1 Maximum [in]	1.864
L1 Minimum [in]	1.884
L2 [in]	0.070
Housing Bore Diameter D Maximum [in]	1.5630
Housing Bore Diameter D Minimum [in]	1.5625

Performance Specifications

Number of Ball Circuits	6
Dynamic Load Maximum [lb]	725
Dynamic Load Normal [lb]	684
Static Load Maximum [lb]	630
Static Load Normal [lb]	492