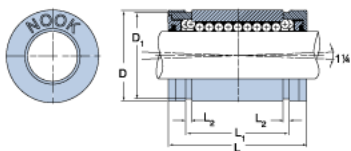
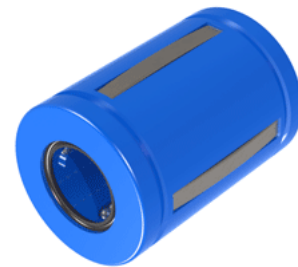


EXCEL XLEC08UU

Call 800-321-7800 or visit us online at www.nookindustries.com to configure and order your EXCEL XLEC08UU today!



Product Info

Nominal Shaft Diameter [in]	1/2
Part Number	XLEC08UU

Dimensions

D1 [in]	0.8209
L Maximum [in]	1.230
L Minimum [in]	1.250
L1 Maximum [in]	1.012
L1 Minimum [in]	1.032
L2 [in]	0.050
Housing Bore Diameter D Maximum [in]	0.8755
Housing Bore Diameter D Minimum [in]	0.8750

Performance Specifications

Number of Ball Circuits	4
Dynamic Load Maximum [lb]	175
Dynamic Load Normal [lb]	152
Static Load Maximum [lb]	158
Static Load Normal [lb]	112