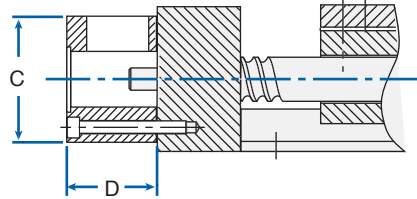
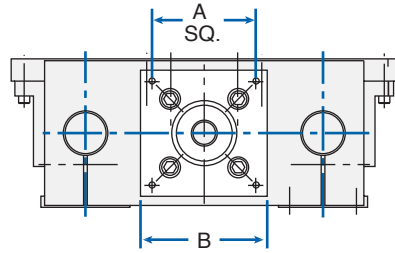


MOTOR ADAPTERS: SERIES 212, 252 and MM SLIDE™



PowerTrax™ Slide System Motor Adapters allow for direct connection of a motor to a slide. Custom configurations are available, contact Nook Industries.

- Coupling is included
- Available for Series 212, 252, 312 and MM Slide™
- Aluminum construction

MOTOR ADAPTORS FOR 212, 252 & 312					
SLIDE PART NO.	Frame Size	DIMENSION (inches)			
		A	B	C	D
-08	23	1.86	2.25	2.25	1.65
-12	23	1.86	2.25	2.25	1.85
-16	34	2.74	3.25	3.25	2.75
-24	42	3.50	4.25	4.25	2.98

MOTOR ADAPTORS FOR MM SLIDE™					
SLIDE PART NO.	Frame Size	DIMENSION (mm)			
		A	B	C	D
012-06	23	47.25	57.2	57.2	40.9

Contact Nook Industries for additional sizes.

BELLOW BOOTS: SERIES 212 and 252

PowerTrax™ Slide System Bellows Boots protect slide components from contaminants. Custom configurations are available, contact Nook Industries, Inc.

- Available for Series 212 and 252
- PVC coated nylon
- Boot is fastened to the end blocks and carriage plate with hook and loop fasteners.

NOTE: Travel must be adjusted to accommodate retracted boot. Calculation per each boot is:
Retracted Boot = ("Travel" x .14")+.25

EXAMPLE 212-08-LXX with 24" Travel:

$$\begin{aligned} \text{"L"} &= (\text{Travel} + 8.5") + \text{Ret. Boot} + \text{Ret. Boot} \\ 39.7" &= (24" + 8.5") + 3.6" + 3.6" \end{aligned}$$

(See page 228-229 for 212 and 252 Series min "L" dimension.)

