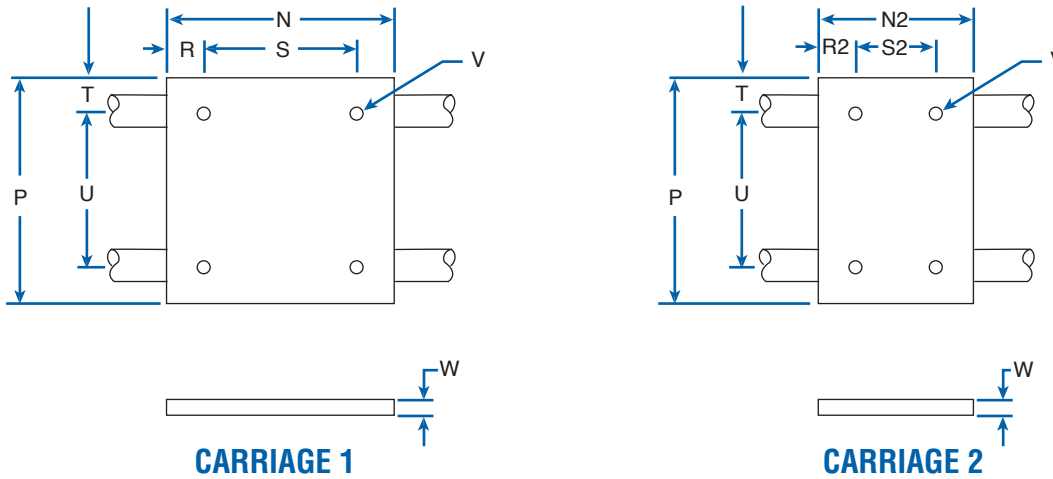


CARRIAGE MOUNTING PLATES

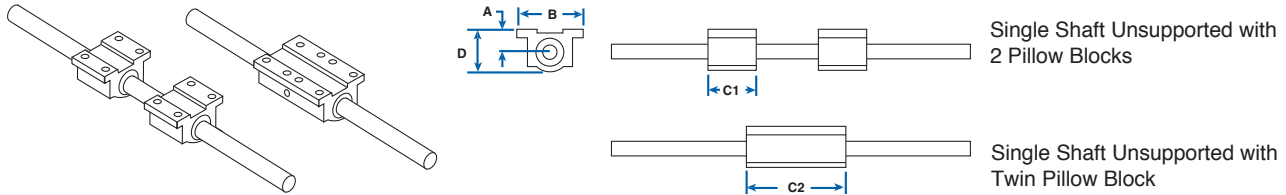


CARRIAGE MOUNTING PLATES

NOMINAL SHAFT DIA.	DIMENSION (inches)										
	CARRIAGE 1			COMMON TO CARRIAGE 1 & 2					CARRIAGE 2		
	N	R	S	P	T	U	V	W	N2	R2	S2
1/2	5.50	.500	4.50	5.50	1.125	3.25	1/4-20	.375	3.50	.50	2.50
3/4	7.50	.750	6.00	7.50	1.500	4.50	5/16-18	.50	4.50	.75	3.00
1	9.00	1.000	7.00	9.00	1.750	5.50	3/8-16	.50	6.00	1.00	4.00
1-1/2	13.00	1.500	10.00	13.00	2.500	8.00	1/2-13	.75	9.00	1.50	6.00

Material: Aluminum Alloy Black Anodized

SERIES 111: SINGLE SHAFT UNSUPPORTED SYSTEM



SINGLE SHAFT UNSUPPORT WITH 2 PILLOW BLOCKS

PART NO.	NOM. SHAFT DIA. (in.)	LOAD (lbf)* MAX/BLOCK	DIMENSION (inches)				PILLOW BLOCK**
			A ±.001	B	C1	D	
111-06-SXX	3/8	68	0.500	1.75	1.31	0.94	XEP-6
111-08-SXX	1/2	175	0.687	2.00	1.69	1.25	XEP-8
111-12-SXX	3/4	406	0.937	2.75	2.06	1.75	XEP-12
111-16-SXX	1	725	1.187	3.25	2.81	2.19	XEP-16
111-24-SXX	1-1/2	1,376	1.750	4.75	4.00	3.25	XEP-24

SINGLE SHAFT UNSUPPORTED WITH TWIN PILLOW BLOCKS

PART NO.	NOM. SHAFT DIA. (in.)	LOAD (lbf)* MAX/BLOCK	DIMENSION (inches)				PILLOW BLOCK**
			A ±.001	B	C2	D	
111-06-TXX	3/8	136	0.500	1.75	2.75	0.94	TEP-6
111-08-TXX	1/2	350	0.687	2.00	3.50	1.25	TEP-8
111-12-TXX	3/4	812	0.937	2.75	4.50	1.75	TEP-12
111-16-TXX	1	1,450	1.187	3.25	6.00	2.19	TEP-16
111-24-TXX	1-1/2	2,752	1.750	4.75	9.00	3.25	TEP-24

* Based on horizontal load, equally distributed to each bearing with a travel life of 2 million inches. ** See pages 231-232 for details. XX = shaft length - see page 241.