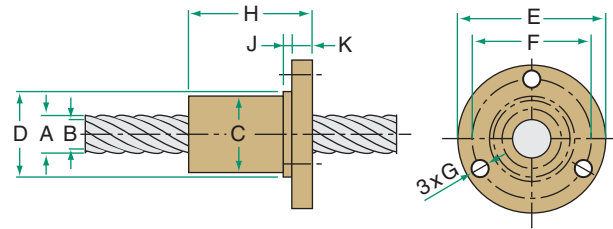




# 16 and 17.6 Speedy™ METRIC THREAD

**LEAD ACCURACY:** ±17.5µm/25mm



METRIC LEAD SCREW AND NUT TECHNICAL DATA

PRODUCT SPECIFICATIONS		SCREW SIZE				
		16x21	16x25	16x90	17.6x50.8	
Diameter - A (mm)		16.5	16.0	17.0	17.6	
Lead (mm)		21	25	90	50.8	
Pitch (mm)		3	5	5	5.08	
Starts		7	5	18	10	
Weight (kg/m)		1.42	1.17	1.54	1.61	
B - root diameter (mm)		13.6	11.5	14.3	14.4	
Part No. *	RH	Alloy	ESS-1621-RA	ESS-1625-RA	ESS-1690-RA	ESS-1750-RA
		Stainless	ESS-1621-RS	ESS-1625-RS	ESS-1690-RS	ESS-1750-RS
	LH	Alloy	ESS-1621-LA	—	ESS-1690-LA	—
		Stainless	ESS-1621-LS	—	ESS-1690-LS	—

\* Custom Lengths Available - See page 47 to specify length

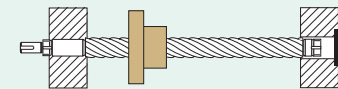
BRONZE NUT		16x21	16x25	16x90	17.6x50.8
Load Rating (N)		2340	2015	2925	2860
Efficiency		73.3%	75.5%	74.3%	78.5%
Torque to Raise 1 kN (N·m)		4.6	5.3	19.3	10.3
Weight (g)		204	213	200	200
Part No.	RH	ESN-1621-RBN	ESN-1625-RBN	ESN-1690-RBN	ESN-1750-RBN
	LH	ESN-1621-LBN	—	ESN-1690-LBN	—

PLASTIC NUT		16x21	16x25	16x90	17.6x50.8
Load Rating (N)		1800	1550	2250	2200
Efficiency		81.9%	83.6%	83.8%	86.1%
Torque to Raise 1 kN (N·m)		4.1	4.7	17.1	9.4
Weight (g)		40	42	39	38
Part No.	RH	ESN-1621-RPN	ESN-1625-RPN	ESN-1690-RPN	ESN-1750-RPN
	LH	ESN-1621-LPN	—	ESN-1690-LPN	—

NUT DIMENSIONS (mm)		16x21	16x25	16x90	17.6x50.8
C Nut Diameter		29.5	29.5	29.5	29.5
D Pilot Diameter		30	30	30	30
E Flange Diameter		49	49	49	49
F BCD Mounting Hole		39	39	39	39
G Mounting Hole Diameter		5.1	5.1	5.1	5.1
H Nut Length	Bronze	30	30	30	30
	Plastic	42	42	42	42
J Pilot Width		3	3	3	3
K Flange Width		7	7	7	7

## LEAD SCREW ASSEMBLIES

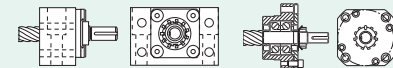
These assemblies are shipped with screw, nut, flange, and bearing supports.



See page 41 for complete product details.

## EZZE-MOUNT™ END BEARING SUPPORTS

A convenient solution for mounting acme screw assemblies.



Single or Double Bearing Universal Mount      Single or Double Bearing Flange Mount

**EZZE-MOUNT™ available for:**

All 16 and 17.6mm Screws

See page 214 for complete product details.

## LUBRICANT

Prolong lead screw and nut performance with these special lubricants.



PAG-1 1 lb. Lead Screw Grease

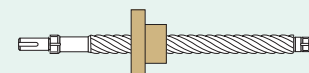


E-100 12 Oz. Lead Screw Spray Lubricant

See page 14 for complete product details.

## END MACHINING

Machining for Nook standard ends or custom requirement available.



See page 212 for complete product details.