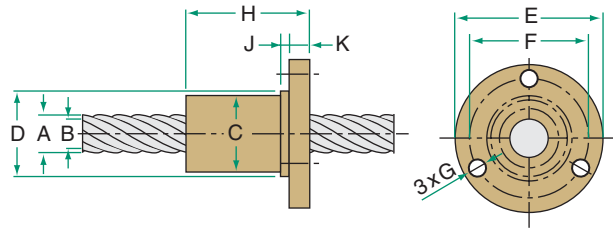


# 15 Speedy™ METRIC THREAD

**LEAD ACCURACY:** ±17.5µm/25mm



METRIC LEAD SCREW AND NUT TECHNICAL DATA

| PRODUCT SPECIFICATIONS |      | SCREW SIZE   |             |
|------------------------|------|--------------|-------------|
|                        |      | <b>15x80</b> |             |
| Diameter - A (mm)      | 15.2 |              |             |
| Lead (mm)              | 80   |              |             |
| Pitch (mm)             | 5    |              |             |
| Starts                 | 16   |              |             |
| Weight (kg/m)          | 1.22 |              |             |
| B - root diameter (mm) | 12.6 |              |             |
| Part No. *             | RH   | Alloy        | ESS-1580-RA |
|                        |      | Stainless    | ESS-1580-RS |
|                        | LH   | Alloy        | ESS-1580-LA |
|                        |      | Stainless    | ESS-1580-LS |

\* Custom Lengths Available - See page 47 to specify length

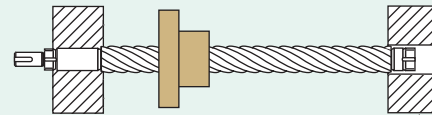
| BRONZE NUT                 |       | 15x80        |  |
|----------------------------|-------|--------------|--|
| Load Rating (N)            | 2600  |              |  |
| Efficiency                 | 74.4% |              |  |
| Torque to Raise 1 kN (N·m) | 17.1  |              |  |
| Weight (g)                 | 161   |              |  |
| Part No.                   | RH    | ESN-1580-RBN |  |
|                            | LH    | ESN-1580-LBN |  |

| PLASTIC NUT                |       | 15x80        |  |
|----------------------------|-------|--------------|--|
| Load Rating (N)            | 2000  |              |  |
| Efficiency                 | 83.8% |              |  |
| Torque to Raise 1 kN (N·m) | 15.2  |              |  |
| Weight (g)                 | 42    |              |  |
| Part No.                   | RH    | ESN-1580-RPN |  |
|                            | LH    | ESN-1580-LPN |  |

| NUT DIMENSIONS (mm)      |         | 15x80 |  |
|--------------------------|---------|-------|--|
| C Nut Diameter           | 29.5    |       |  |
| D Pilot Diameter         | 30      |       |  |
| E Flange Diameter        | 49      |       |  |
| F BCD Mounting Hole      | 39      |       |  |
| G Mounting Hole Diameter | 5.1     |       |  |
| H Nut Length             | Bronze  | 30    |  |
|                          | Plastic | 42    |  |
| J Pilot Width            | 3       |       |  |
| K Flange Width           | 7       |       |  |

## LEAD SCREW ASSEMBLIES

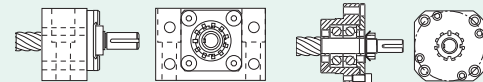
These assemblies are shipped with screw, nut, flange, and bearing supports.



See page 41 for complete product details.

## EZZE-MOUNT™ END BEARING SUPPORTS

A convenient solution for mounting lead screw assemblies.



Single or Double Bearing  
Universal Mount

Single or Double Bearing  
Flange Mount

**EZZE-MOUNT™ available for: 15mm Screws**  
See page 214 for complete product details.

## LUBRICANT

Prolong lead screw and nut performance with these special lubricants.



E-100 12 Oz.  
Lead Screw  
Spray Lubricant

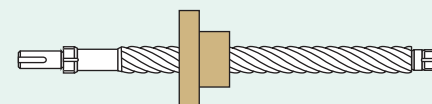


PAG-1 1 lb.  
Lead Screw  
Grease

See page 14 for complete product details.

## END MACHINING

Machining for Nook standard ends or custom requirement available.



See page 212 for complete product details.