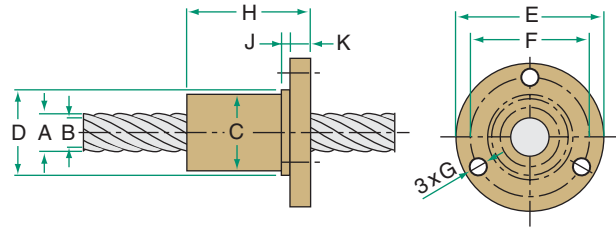




13 Speedy™ METRIC THREAD

LEAD ACCURACY: ±17.5µm/25mm



METRIC LEAD SCREW AND NUT TECHNICAL DATA

PRODUCT SPECIFICATIONS		SCREW SIZE		
		13x20	13x70	
Diameter - A (mm)		13.3	13.5	
Lead (mm)		20	70	
Pitch (mm)		5	5	
Starts		4	14	
Weight (kg/m)		.75	.94	
B - root diameter (mm)		8.8	10.9	
Part No. *	RH	Alloy	ESS-1320-RA	ESS-1370-RA
		Stainless	ESS-1320-RS	ESS-1370-RS
	LH	Alloy	—	ESS-1370-LA
		Stainless	—	ESS-1370-LS

* Custom Lengths Available - See page 47 to specify length

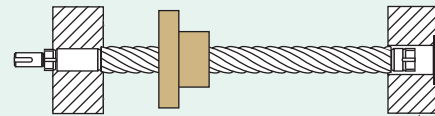
BRONZE NUT		13x20	13x70
Load Rating (N)		1690	2275
Efficiency		75.1%	74.6%
Torque to Raise 1 kN (N·m)		4.2	14.9
Weight (g)		175	170
Part No.	RH	ESN-1320-RBN	ESN-1370-RBN
	LH	—	ESN-1370-LBN

PLASTIC NUT		13x20	13x70
Load Rating (N)		1300	1750
Efficiency		83.3%	83.9%
Torque to Raise 1 kN (N·m)		3.8	13.3
Weight (g)		34	33
Part No.	RH	ESN-1320-RPN	ESN-1370-RPN
	LH	—	ESN-1370-LPN

NUT DIMENSIONS (mm)		13x20	13x70
C Nut Diameter		25.5	25.5
D Pilot Diameter		26	26
E Flange Diameter		46	46
F BCD Mounting Hole		36	36
G Mounting Hole Diameter		5.1	5.1
H Nut Length	Bronze	30	30
	Plastic	42	42
J Pilot Width		3	3
K Flange Width		7	7

LEAD SCREW ASSEMBLIES

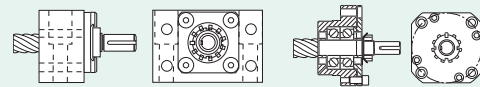
These assemblies are shipped with screw, nut, flange, and bearing supports.



See page 41 for complete product details.

EZZE-MOUNT™ END BEARING SUPPORTS

A convenient solution for mounting lead screw assemblies.



Single or Double Bearing
Universal Mount

Single or Double Bearing
Flange Mount

EZZE-MOUNT™ available for: all 13mm Screws
See page 214 for complete product details.

LUBRICANT

Prolong lead screw and nut performance with these special lubricants.



E-100 12 Oz.
Lead Screw
Spray Lubricant

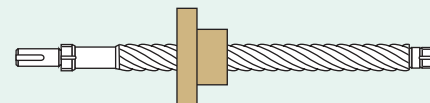


PAG-1 1 lb.
Lead Screw
Grease

See page 14 for complete product details.

END MACHINING

Machining for Nook standard ends or custom requirement available.



See page 212 for complete product details.