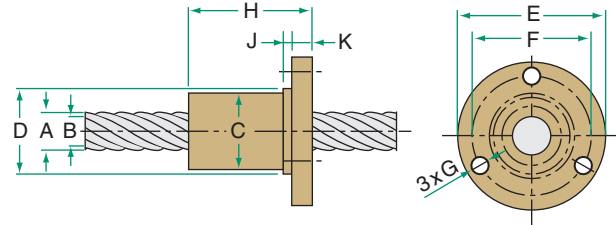




10 Speedy™ METRIC THREAD

LEAD ACCURACY: ±17.5µm/25mm



METRIC LEAD SCREW AND NUT TECHNICAL DATA

PRODUCT SPECIFICATIONS		SCREW SIZE				
		10x10	10x12	10x35	10x50	
Diameter - A (mm)		10.0	10.0	10.1	10.0	
Lead (mm)		10	12	35	50	
Pitch (mm)		1.25	2.5	0.36	5	
Starts		8	4	28	10	
Weight (kg/m)		.54	.46	.59	.48	
B - root diameter (mm)		8.2	7.1	8.9	7.4	
Part No. *	RH	Alloy	ESS-1010-RA	ESS-1012-RA	ESS-1035-RA	ESS-1050-RA
		Stainless	ESS-1010-RS	ESS-1012RS	ESS-1035-RS	ESS-1050-RS
	LH	Alloy	—	ESS-1012-LA	ESS-1035-LA	ESS-1050-LS
		Stainless	—	ESS-1012-LS	ESS-1035-LS	ESS-1050-LS

* Custom Lengths Available - See page 47 to specify length

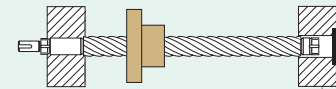
BRONZE NUT		10x10	10x12	10x35	10x50
Load Rating (N)		780	1560	780	1625
Efficiency		69.8%	72.5%	78.2%	75.1%
Torque to Raise 1 kN (N·m)		22.9	2.6	7.1	10.6
Weight (g)		95	100	95	105
Part No.	RH	ESN-1010-RBN	ESN-1012-RBN	ESN-1035-RBN	ESN-1050-RBN
	LH	—	ESN-1012-LBN	ESN-1035-LBN	ESN-1050-LBN

PLASTIC NUT		10x10	10x12	10x35	10x50
Load Rating (N)		600	1250	600	1250
Efficiency		79.2%	81.3%	86.1%	84.2%
Torque to Raise 1 kN (N·m)		2.0	2.3	6.5	9.4
Weight (g)		18	19	19	37
Part No.	RH	ESN-1010-RPN	ESN-1012-RPN	ESN-1035-RPN	ESN-1050-RPN
	LH	—	ESN-1012-LPN	ESN-1035-LPN	ESN-1050-LPN

NUT DIMENSIONS (mm)		10x10	10x12	10x35	10x50
C Nut Diameter		23.5	23.5	23.5	25.5
D Pilot Diameter		24	24	24	26
E Flange Diameter		42	42	42	46
F BCD Mounting Hole		32	32	32	36
G Mounting Hole Diameter		4.2	4.2	4.2	5.1
H Nut Length	Bronze	18	18	18	30
	Plastic	25	25	25	42
J Pilot Width		3	3	3	3
K Flange Width		5	5	5	7

LEAD SCREW ASSEMBLIES

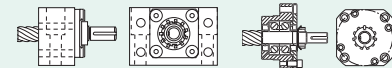
These assemblies are shipped with screw, nut, flange, and bearing supports.



See page 41 for complete product details.

EZZE-MOUNT™ END BEARING SUPPORTS

A convenient solution for mounting acme screw assemblies.



Single or Double Bearing Universal Mount Single or Double Bearing Flange Mount

EZZE-MOUNT™ available for:

All 10mm Screws

See page 214 for complete dimensions.

LUBRICANT

Prolong lead screw and nut performance with these special lubricants.



PAG-1 1 lb. Lead Screw Grease

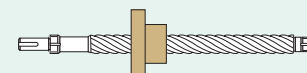


E-100 12 Oz. Lead Screw Spray Lubricant

See page 14 for complete product details.

END MACHINING

Machining for Nook standard ends or custom requirement available.



See page 212 for complete product details.