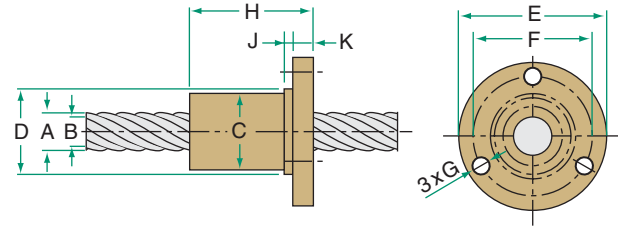


8 Speedy™ METRIC THREAD

LEAD ACCURACY: ±17.5µm/25mm



METRIC LEAD SCREW AND NUT TECHNICAL DATA

PRODUCT SPECIFICATIONS		SCREW SIZE		
		8x10	8x30	
Diameter - A (mm)		8.2	8.6	
Lead (mm)		10	30	
Pitch (mm)		2.5	1.25	
Starts		4	24	
Weight (kg/m)		.30	.44	
B - root diameter (mm)		5.5	7.5	
Part No. *	RH	Alloy	ESS-0810-RA	ESS-0830-RA
		Stainless	ESS-0810-RS	ESS-0830-RS
	LH	Alloy	—	ESS-0830-LA
		Stainless	—	ESS-0830-LS

* Custom Lengths Available - See page 47 to specify length

BRONZE NUT		8x10	8x30
Load Rating (N)		1040	650
Efficiency		72.7%	78.2%
Torque to Raise 1 kN (N·m)		2.2	6.1
Weight (g)		95	74
Part No.	RH	ESN-0810-RBN	ESN-0830-RBN
	LH	—	ESN-0830-LBN

PLASTIC NUT		8x10	8x30
Load Rating (N)		800	500
Efficiency		81.5%	86.0%
Torque to Raise 1 kN (N·m)		2.0	5.8
Weight (g)		95	74
Part No.	RH	ESN-0810-RPN	ESN-0830-RPN
	LH	—	ESN-0830-LPN

NUT DIMENSIONS (mm)		8x10	8x30
C Nut Diameter		23.5	20.5
D Pilot Diameter		24	21
E Flange Diameter		42	38
F BCD Mounting Hole		32	29
G Mounting Hole Diameter		4.2	4.2
H Nut Length	Bronze	18	18
	Plastic	25	25
J Pilot Width		3	3
K Flange Width		5	5

LUBRICANT

Prolong lead screw and nut performance with these special lubricants.



E-100 12 Oz.
Lead Screw
Spray Lubricant



PAG-1 1 lb.
Lead Screw
Grease

See page 14 for complete product details.