

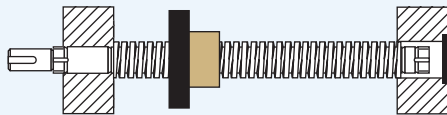
2-1/4" ACME THREAD

LEAD ACCURACY: ±0.0003 in./in.

LOAD CAPACITY (lbs.)	DYNAMIC	STATIC
BRONZE NUT	25,312	81,000
PLASTIC NUT	12,656	12,656

ACME SCREW ASSEMBLIES

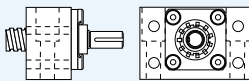
These assemblies are shipped with screw, nut, flange, and bearing supports.



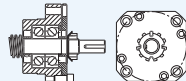
See page 41 for complete product details.

EZZE-MOUNT™ END BEARING SUPPORTS

A convenient solution for mounting acme screw assemblies.



Single or Double Bearing
Universal Mount

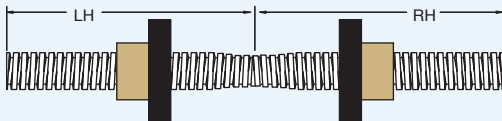


Single or Double Bearing
Flange Mount

EZZE-MOUNT™ available for: 2-1/4"-4"
See page 214 for complete product details.

TWIN-LEAD SCREW

Single piece twin-lead screws offer opposing motion through a single drive system.



Twin-Lead Screw available for: All 2-1/4" Screws
See page 44 for complete product details.

LUBRICANT

Prolong acme screw and nut performance with these special lubricants.



E-100 12 Oz.
Acme Screw
Spray Lubricant



PAG-1 1 lb.
Acme Screw
Grease

See page 14 for complete product details.

PRODUCT SPECIFICATIONS		SCREW SIZE	
		2 1/4"-2	2 1/4"-4
Lead		.500	.250
Pitch		.500	.250
Starts		1	1
Threads Per Inch		2	4
Lash (Maximum Axial)		.021	.012
"A" – Root Diameter (min.)		1.684	1.944
Weight (lbs./ft.)		10.58	11.29
Thread Code		222	224
Form		40°	2C
36" Standard Length Part No. *	RH	4140	11222
		Stainless	—
	LH	4140	51222
		Stainless	—
72" Standard Length Part No. *	RH	4140	12222
		Stainless	—
	LH	4140	52222
		Stainless	—
144" Standard Length Part No. *	RH	4140	13222
		Stainless	—
	LH	4140	53222
		Stainless	—

* Custom Lengths Available - See page 15 to specify length

BRONZ/AC BRONZE NUT		2 1/4"-2	2 1/4"-4
Efficiency		37%	22%
Torque to Raise 1 lb. (in.-lb.)		.215	.181
Weight (lbs.)		5.25	4.98
Part No.	RH	20222	20224
	LH	80222	80224

PLAST/AC PLASTIC NUT		2 1/4"-2	2 1/4"-4
Efficiency		42%	27%
Torque to Raise 1 lb. (in.-lb.)		.188	.150
Weight (lbs.)		.76	.72
Part No.	RH	30222	30224
	LH	40222	40224

FLANGE - STEEL		2 1/4"-2	2 1/4"-4
Weight (lbs.)		9.88	9.88
Standard Part No.		70540	70540
No-Lash™ Part No.		73540	73540

INCH ACME SCREW AND NUT TECHNICAL DATA