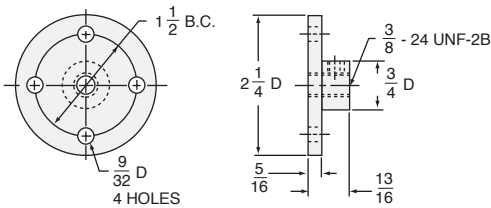
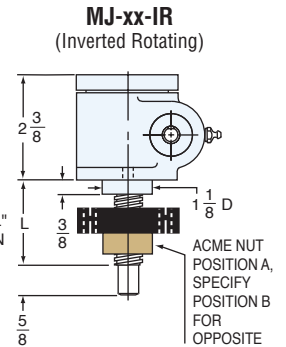
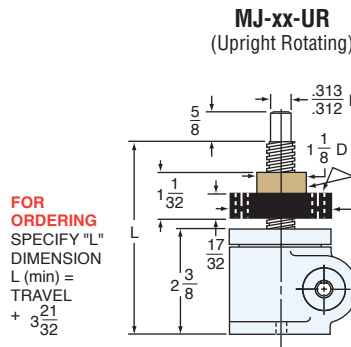
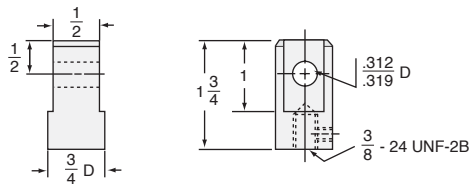


TOP PLATE (optional): B9000-00-12



CLEVIS END (optional): B9001-00-12



MODEL NO.	GEAR RATIO	TURNS OF WORM PER INCH TRAVEL	*RATING AT 1750 rpm INPUT SPEED		MAX. HP	TORQUE TO RAISE 1 LB. (in.-lb.)		SCREW SIZE	TORQUE AT 1000 LB. LOAD (in.-lb.)	MAX. rpm AT 1000 lb. LOAD		**COMPRESSION LOADING MAX TRAVEL	
			LOAD (lbs.)	LIFT RATE (in./min.)		NON-KEYED	KEYED			NON-KEYED	KEYED	at 1000 lb.	at ANY LOAD
MJ-20	5:1	20	600	90.0	1/3	.019	.022	1/2-4	19.3	1090	950	7.2	8.75
MJ-25	5:1	25	560	72.0	1/3	.021	.024	5/8-5	20.7	1040	900	8.3	9.38
MJ-40	5:1	40	700	45.0	1/3	.017	.020	5/8-8	16.7	1260	1100	11.88	11.88
MJ-50	5:1	50	860	36.0	1/3	.014	.016	1/2-10	13.5	1560	1350	8.3	9.38
MJ-80	20:1	80	720	22.5	1/6	.008	.009	1/2-4	8.0	1310	1140	7.2	8.75
MJ-100	20:1	100	670	18.0	1/6	.009	.010	5/8-5	8.7	1210	1050	8.3	9.38
MJ-160	20:1	160	830	11.2	1/6	.007	.008	5/8-8	7.0	1500	1300	11.88	11.88
MJ-200	20:1	200	1000	9.0	1/6	.006	.007	1/2-10	5.7	1800	1560	8.3	9.38

MJ STANDARD

WEIGHT (Approx. in Pounds)

- "0" TRAVEL: 2.5
- PER INCH TRAVEL: 0.2
- GREASE: 0.5

* Load may be increased to a maximum of 1000 lbs. if the input speed is correspondingly reduced such that the maximum allowable hp is not exceeded.

** Travel is based on one end fixed and the other end free. For both ends supported multiply by 2, for one end fixed, the other end supported multiply by 3, for both ends fixed multiply by 4. See page 316 for mounting conditions.

LIFTING SCREW OR NUT MUST BE SECURED TO PREVENT ROTATION FOR NON-KEYED UNITS.

CAUTION! JACK MAY BE SELF-LOWERING IN SOME OPERATING CONDITIONS.