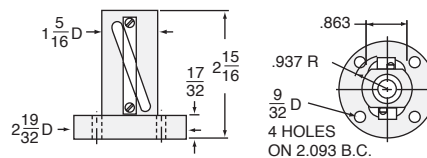


BALL NUT & FLANGE DIMENSIONS



FOR ORDERING
SPECIFY "L" DIMENSION
L (min) = TRAVEL + 6 11/16

FOR ORDERING
SPECIFY "L" DIMENSION
L (min) = TRAVEL + 3 13/16

1HL-BSJ STANDARD SCREW

SCREW: 0750-0500
 ROOT DIAMETER: 0.602
 DRAG TORQUE: 3 IN.-LB.
 START TORQUE: 2 x Running Torque
 WEIGHT (Approx. in Pounds)
 "D" TRAVEL: 8
 PER INCH TRAVEL: .04
 GREASE: .5

RATIO	TURNS OF WORM PER INCH TRAVEL	TORQUE TO RAISE ONE LB.		MAX. HP	MAX. WORM SPEED AT RATED LOAD		MAX. LOAD AT 1750 RPM	
		NON-KEYED	KEYED		NON-KEYED	KEYED	NON-KEYED	KEYED
5:1	10	.0241 in.-lbs.	.0265 in.-lbs.	1/2	654 rpm	595 rpm	747 lbs.	680 lbs.
20:1	40	.0114 in.-lbs.	.0125 in.-lbs.	1/4	691 rpm	628 rpm	790 lbs.	718 lbs.

CAUTION: JACK IS SELF-LOWERING. LIFTING SCREW OR NUT MUST BE SECURED TO PREVENT ROTATION FOR NON-KEYED UNITS.