

Standard Screw Lengths	PART NUMBERS		
	RH	LH	RHSS
4 FT.	SRT5005	SRT5499	SRT6668
8 FT.	SRT5013	SRT5507	SRT6676
12 FT.	SRT5021	SRT5515	SRT6684
16 FT.	SRT0426	SRT0428	—

Custom cut lengths available up to 24' for alloy, up to 12' for stainless.  
For longer lengths contact Customer Service.

# 1000-0250 SRT

**LEAD ACCURACY:** ±0.004 in./ft.

Single Start

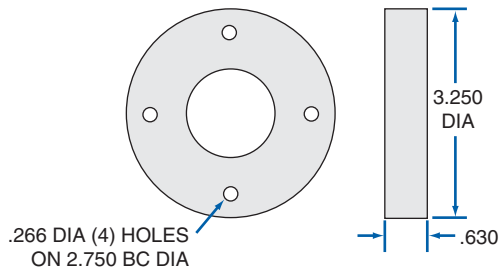
- 1.000** Ball Circle Diameter
- 0.250** Lead
- 0.820** Root Diameter
- 0.156** Nominal Ball Diameter
- 2.2** Screw Weight (lbs./ft.)

SBN Single Circuit Ball Nut				86 bearing balls total per nut
PRODUCT SPECIFICATIONS	RH	LH	RHSS	
Dynamic Load (lbs.)	1,612	1,612	290	
Static Load (lbs.)	13,913	13,913	2,504	
Torque to Raise 1 lb. (in.-lb.)	.044	.044	.044	
Nut Weight (lbs.)	.8	.8	.8	
Ball Nut Number	SBN10466	SBN10468	SBN10470	
Flange Part Number	FLG7571	FLG7571	—	
Wiper Kit Part Number	WKB1050	WKB1050	WKB1050	

SBN Double Circuit Ball Nut				86 bearing balls per circuit - 172 total per nut
PRODUCT SPECIFICATIONS	RH	LH	RHSS	
Dynamic Load (lbs.)	3,224	—	—	
Static Load (lbs.)	27,826	—	—	
Torque to Raise 1 lb. (in.-lb.)	.044	—	—	
Nut Weight (lbs.)	1.2	—	—	
Ball Nut Number	SBN10472	—	—	
Flange Part Number	FLG7571	—	—	
Wiper Kit Part Number	WKB1050	—	—	

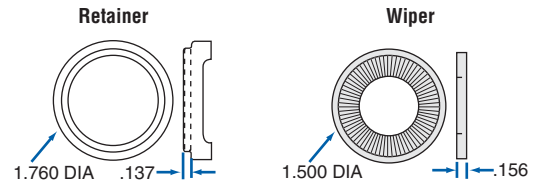
SBN Double Circuit Flanged Ball Nut				86 bearing balls per circuit - 172 total per nut
PRODUCT SPECIFICATIONS	RH	LH	RHSS	
Dynamic Load (lbs.)	3,224	3,224	—	
Static Load (lbs.)	27,826	27,826	—	
Torque to Raise 1 lb. (in.-lb.)	.044	.044	—	
Nut Weight (lbs.)	1.5	1.5	—	
Ball Nut Number	SBN8278	SBN8284	—	
Flange	INTEGRAL	INTEGRAL	—	
Wiper Kit Part Number	WKB2651	WKB2651	—	

### Flange - FLG7571



### Brush Wiper Kit - WKB1050

2 wipers and 1 retainer



### Brush Wiper Kit - WKB2651

2 wipers and 1 retainer

