

Standard Screw Lengths	PART NUMBERS	
	RH	
4 FT.	SRT7552	
8 FT.	SRT7596	
12 FT.	SRT7292	

Custom cut lengths available up to 24'. For longer lengths contact Customer Service.

0750-0500 SRT

LEAD ACCURACY: ±0.004 in./ft.

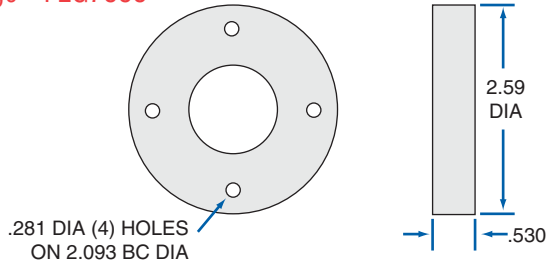
Double Start

- 0.750** Ball Circle Diameter
- 0.500** Lead
- 0.602** Root Diameter
- 0.141** Nominal Ball Diameter
- 1.22** Screw Weight (lbs./ft.)

SBN Double Circuit Ball Nut		78 bearing balls per circuit - 156 total per nut
PRODUCT SPECIFICATIONS	RH	
Dynamic Load (lbs.)	2,723	
Static Load (lbs.)	17,425	
Torque to Raise 1 lb. (in.-lb.)	.088	
Nut Weight (lbs.)	.8	
Ball Nut Number	SBN7500	
Flange Part Number	FLG7555	
Wiper Kit Part Number	WKB7200	

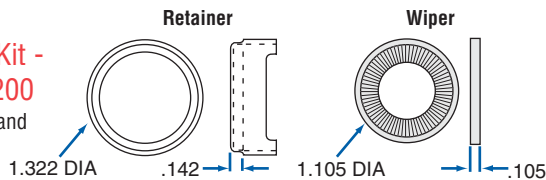
SEL Adjustable Preload Ball Nut		78 bearing balls per circuit - 312 total per nut
PRODUCT SPECIFICATIONS	RH	
Dynamic Load (lbs.)	2,723	
Static Load (lbs.)	17,425	
Torque to Raise 1 lb. (in.-lb.)	.088	
Preload Range (lbs.)	272-817	
Nut Weight (lbs.)	.8	
Ball Nut Number	SEL10058	
Flange Part Number	FLG7555	
Wiper Kit Part Number	WKB7200	

Flange - FLG7555



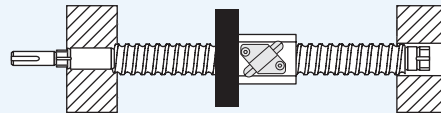
Brush Wiper Kit - WKB7200

2 wipers and
1 retainer



BALL SCREW ASSEMBLIES

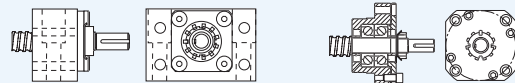
These assemblies are shipped with screw, nut, flange, and bearing supports.



See page 145 for complete product details.

EZZE-MOUNT™ END BEARING SUPPORTS

A convenient solution for mounting ball screw assemblies.



Single or Double Bearing
Universal Mount

Single or Double Bearing
Flange Mount

See page 214 for complete product details.