



0631-0500 SRT

LEAD ACCURACY: ±0.004 in./ft.

Double Start

- 0.631** Ball Circle Diameter
- 0.500** Lead
- 0.500** Root Diameter
- 0.125** Nominal Ball Diameter
- 0.82** Screw Weight (lbs./ft.)

Standard Screw Lengths	PART NUMBERS
	RH
2 FT.	SRT6524
4 FT.	SRT6548
6 FT.	SRT6572

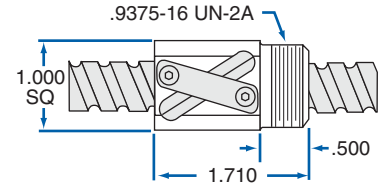
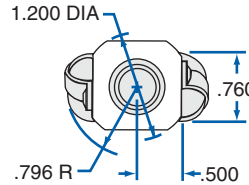
Custom cut lengths available up to 12'. For longer lengths contact Customer Service.

INCH BALL SCREW AND NUT TECHNICAL DATA

SBN Double Circuit Ball Nut

37 bearing balls per circuit - 74 total per nut

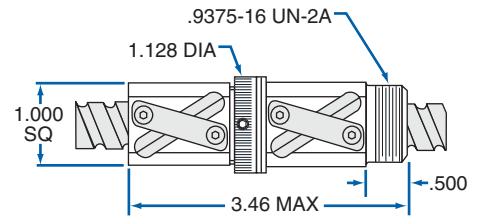
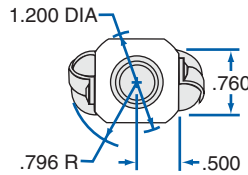
PRODUCT SPECIFICATIONS	RH
Dynamic Load (lbs.)	960
Static Load (lbs.)	5,565
Torque to Raise 1 lb. (in.-lb.)	.088
Nut Weight (lbs.)	.27
Ball Nut Number	SBN10113
Flange Part Number	FLG7570



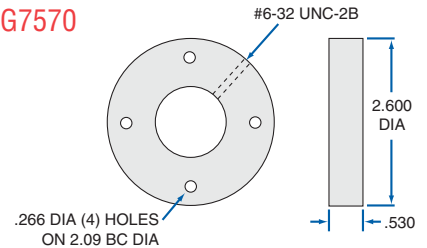
SEL Adjustable Preload Ball Nut

37 bearing balls per circuit - 148 total per nut

PRODUCT SPECIFICATIONS	RH
Dynamic Load (lbs.)	960
Static Load (lbs.)	5,565
Torque to Raise 1 lb. (in.-lb.)	.088
Preload Range (lbs.)	96-288
Nut Weight (lbs.)	.65
Ball Nut Number	SEL10182
Flange Part Number	FLG7570



Flange - FLG7570



0631-1000 SRT

LEAD ACCURACY: ±0.004 in./ft.

Double Start

- 0.631** Ball Circle Diameter
- 1.000** Lead
- 0.500** Root Diameter
- 0.125** Nominal Ball Diameter
- 0.82** Screw Weight (lbs./ft.)

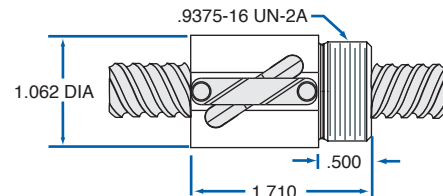
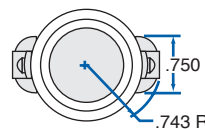
Standard Screw Lengths	PART NUMBERS
	RH
2 FT.	SRT6124
4 FT.	SRT6148
6 FT.	SRT6172

Custom cut lengths available up to 12'. For longer lengths contact Customer Service.

SBN Double Circuit Ball Nut

21 bearing balls per circuit - 42 total per nut

PRODUCT SPECIFICATIONS	RH
Dynamic Load (lbs.)	620
Static Load (lbs.)	2580
Torque to Raise 1 lb. (in.-lb.)	0.177
Nut Weight (lbs.)	0.28
Ball Nut Number	SBN10392*
Flange Part Number	FLG 7570



* High capacity 4 circuit available—consult engineers