
Request for Quotation

Fax: (216) 378-9923

Date: _____

Pages (Including this cover): _____

Customer: _____

Address: _____

City: _____

State/Province: _____

Country: _____

Zip: _____

Contact Name: _____

Phone: _____

Fax: _____

E-mail: _____

Template Title

Quantity

_____	_____
_____	_____
_____	_____

FAX CUSTOMER SERVICE at: (216) 378-9923 with a copy of your drawing or select a template from the following pages that best matches your application requirements.

1. Fill in all available data with tolerance in metric units.
2. If a specification is not on the template, add the applicable dimensions and tolerances desired.
3. If a specification is not required but is on the template, draw a line through it, and mark the item description with N/A.
4. Include additional notes to the template to aid in quoting and manufacturing.

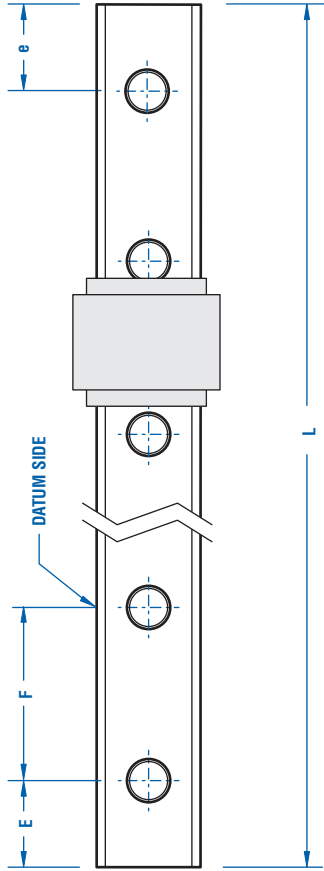
For questions or help in selecting the best solution for your application requirements, please complete the application data sheet on page 46 and fax it to (216) 378-9923 or email to engineering@precisionactuator.com

APPLICATION ENGINEERING at: (877) 915-7100 or email: engineering@precisionactuator.com

These templates are available in pdf format online
www.precisionactuator.com


Nook Industries, Inc.—Precision Actuator Group • 23300 Mercantile Rd., Cleveland, Ohio 44122-5921

DEFINING DIMENSIONS FOR GUIDE RAIL
(TOP VIEW OF RAIL)



- E DIMENSION _____ mm
- e DIMENSION _____ mm
- L DIMENSION _____ mm
- F STANDARD PITCH DIMENSIONS (BASED ON RAIL SIZE) _____ mm

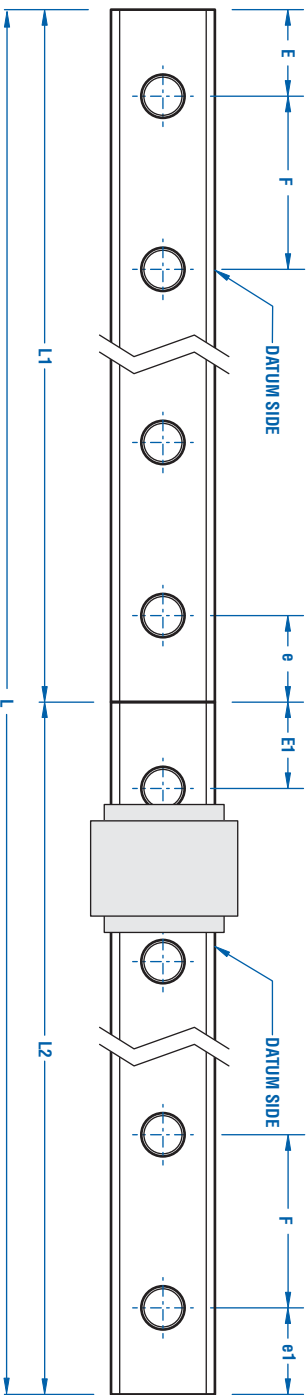
PART NO. _____

CUSTOMER: _____ DRAWING NO. : _____ P.O. NO. : _____	DR. BY: _____ DATE: _____ CHCD BY: _____ DATE: _____ APPROVED BY: _____ DATE: _____	PRECISION ACTUATOR GROUP 2330 Merchville Rd. Cincinnati, Ohio 45225-5921 USA
	THIS DRAWING IS THE PROPERTY OF NOOK INDUSTRIES, INC. AND CAN NOT BE REPRODUCED WITHOUT THE EXPRESSED WRITTEN CONSENT OF NOOK INDUSTRIES, INC.	NOOK INDUSTRIES ...THE LINEAR MOTION PEOPLE
Unless otherwise specified dimensions are in mm	THIRD ANGLE PROJECTION 	SIZE: _____ DWG. NO: _____ REV: _____ SCALE: _____ SHEET _____ OF _____

CUSTOMER REFERENCE: _____

PART NO.

DEFINING DIMENSIONS FOR TWO RAILS BEING JOINED
(TOP VIEW OF RAIL)



- E DIMENSION _____ mm E1 DIMENSION _____ mm
- e DIMENSION _____ mm e1 DIMENSION _____ mm
- L1 DIMENSION _____ mm L2 DIMENSION _____ mm
- L DIMENSION _____ mm F STANDARD PITCH DIMENSION (BASED ON RAIL SIZE)

CUSTOMER:

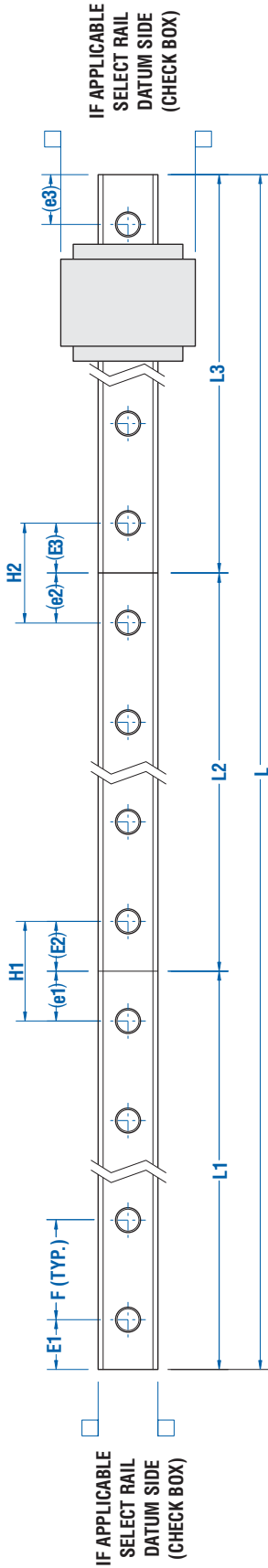
DRAWING NO.:

P.O. NO.:

CUSTOMER REFERENCE:

Unless otherwise specified dimensions are in mm		DR. BY:	DATE:	
THIRD ANGLE PROJECTION		CHCD BY:	DATE:	
THIS DRAWING IS THE PROPERTY OF NOOK INDUSTRIES, INC. AND CAN NOT BE REPRODUCED WITHOUT THE EXPRESSED WRITTEN CONSENT OF NOOK INDUSTRIES, INC.		APPROVED BY:	DATE:	
TITLE: TWO GUIDE RAILS JOINED				
SIZE: _____ GAGE CODE: _____		PRECISION ACTUATOR GROUP 20000 Lorain Rd. Cleveland, Ohio 44122-5921 USA		
SCALE:		DWG. NO.:	REV.:	
SHEET	OF			

**DEFINING DIMENSIONS FOR THREE RAILS BEING JOINED
(TOP VIEW OF RAIL)**



OVERALL LENGTH

$L =$

$L1 =$

$(E1) =$ +

$(e1) =$

$H1 =$

HOLE-TO-HOLE SPACING

$L2 =$

$(E2) =$

$(e2) =$

$H2 =$ +

$(E3) =$

$(e3) =$

$L3 =$

$(E3) =$

$(e3) =$

$H2 =$ +

$(E3) =$

$(e3) =$

F = STANDARD PITCH DIMENSION (BASED ON RAIL SIZE)

PART NO.

<p>PRECISION ACTUATOR GROUP 23300 Mercantile Rd. Cleveland, Ohio 44122-5921 USA</p>		<p>NOOK INDUSTRIES ...THE LINEAR MOTION PEOPLE</p>		<p>PRECISION ACTUATOR GROUP 23300 Mercantile Rd. Cleveland, Ohio 44122-5921 USA</p>	
DR. BY:	DATE:	CHCD BY:	DATE:	APPROVED BY:	DATE:
<p>Unless otherwise specified dimensions are in mm</p>			<p>THIS DRAWING IS THE PROPERTY OF NOOK INDUSTRIES, INC. AND CAN NOT BE REPRODUCED WITHOUT THE EXPRESSED WRITTEN CONSENT OF NOOK INDUSTRIES, INC.</p>		
<p>THIRD ANGLE PROJECTION</p>			<p>TITLE: THREE GUIDE RAILS JOINED</p>		
CUSTOMER:	DRAWING NO.:		SIZE:	GAGE CODE:	DWG. NO.
P.O. NO.:		SCALE:		SHEET	OF
<p>CUSTOMER REFERENCE:</p>					

APPLICATION DATA FORM FOR PROFILE RAIL SYSTEM

Fig. 1 Horizontal Axis

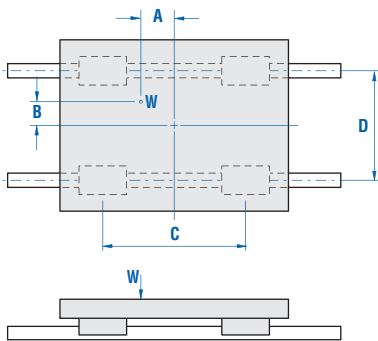


Fig. 2 Vertical Axis

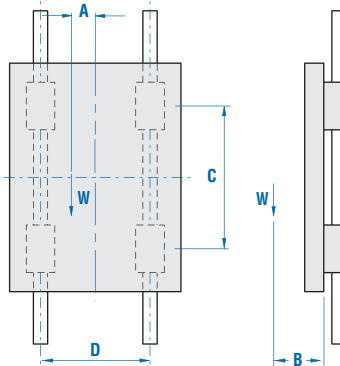
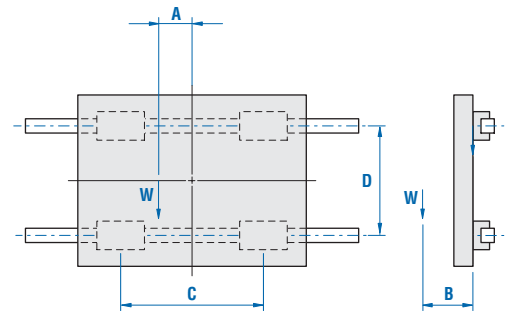


Fig. 3 Perpendicular Horizontal Axis



RAIL LENGTH

Length: _____ mm
 _____ in

Orientation: Fig. 1 Horizontal Axis Fig. 2 Vertical Axis Fig. 3 Perpendicular Axis

LOAD

Load (W): _____ N A: _____ C: _____
 _____ lbf B: _____ D: _____

TRAVEL RATE

Max Speed: _____ m/minute _____ in/min

DESIRED LIFE

Distance per cycle: _____ mm (Usually twice the travel) _____ in

Number of cycles: _____ / day _____ / year Desired Life: _____ years

APPLICATION EXPLANATION

Please briefly describe the application with as many details as possible. Include drawing, sketch, or order template if available.
