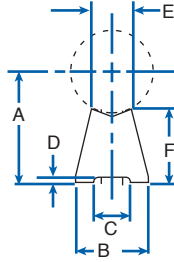


LOW-PROFILE: SHAFT SUPPORT RAILS



STANDARD LENGTHS:
12", 24", 36", and 48"

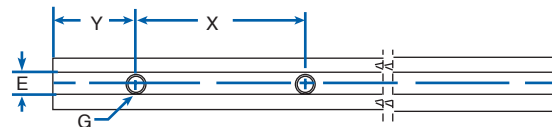
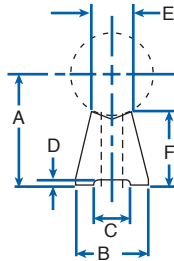
HOW TO ORDER:
State appropriate part number and length.
NLR-10-xx xx=OAL [inches]

MATERIAL: Aluminum alloy extrusion

| PART NO. | NOM. SHAFT DIA. (in.) | A ±.002 | B | C | D | E | F | WT. PER FT./LBS. |
|----------|-----------------------|---------|------|------|-----|------|------|------------------|
| NLR-8 | 1/2 | .5625 | .370 | .169 | .04 | .226 | .338 | .11 |
| NLR-10 | 5/8 | .6875 | .450 | .193 | .04 | .278 | .406 | .17 |
| NLR-12 | 3/4 | .7500 | .510 | .221 | .06 | .335 | .412 | .21 |
| NLR-16 | 1 | 1.000 | .690 | .281 | .06 | .456 | .551 | .36 |
| NLR-20 | 1-1/4 | 1.1875 | .780 | .343 | .09 | .518 | .617 | .45 |
| NLR-24 | 1-1/2 | 1.3750 | .930 | .406 | .09 | .635 | .693 | .60 |

SHAFTING SUPPORTS TECHNICAL DATA

LOW PROFILE: PREDRILLED SHAFT SUPPORT RAILS



STANDARD LENGTHS: 12", 24", 36" and 48"

HOW TO ORDER:
State appropriate part number and length.
NLR-8-PD-xx xx=OAL [inches]

MATERIAL: Aluminum alloy extrusion

| PART NO. | NOM. SHAFT DIA. (in.) | A ±.002 | B | C | D | E | F | G | | Y | X | WT. PER FT./LBS. |
|-----------|-----------------------|---------|------|------|-----|------|------|------|------|----|---|------------------|
| | | | | | | | | BOLT | HOLE | | | |
| NLR-8-PD | 1/2 | .5625 | .370 | .169 | .04 | .226 | .338 | 6 | .169 | 2 | 4 | .11 |
| NLR-10-PD | 5/8 | .6875 | .450 | .193 | .04 | .278 | .406 | 8 | .193 | 2 | 4 | .17 |
| NLR-12-PD | 3/4 | .7500 | .510 | .221 | .06 | .335 | .412 | 10 | .221 | 3 | 6 | .21 |
| NLR-16-PD | 1 | 1.000 | .690 | .281 | .06 | .456 | .551 | 1/4 | .281 | 3 | 6 | .36 |
| NLR-20-PD | 1-1/4 | 1.1875 | .780 | .343 | .09 | .518 | .617 | 5/16 | .343 | 3 | 6 | .45 |
| NLR-24-PD | 1-1/2 | 1.3750 | .930 | .406 | .09 | .635 | .693 | 3/8 | .406 | 4* | 8 | .60 |

*2 on 36" length