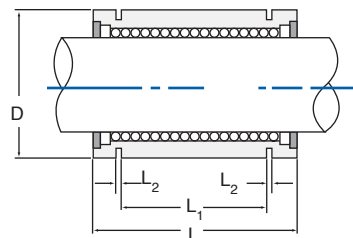




- Designed for use on end supported PowerTrax™ HG “L” shafting
- Solid steel shell, no seals

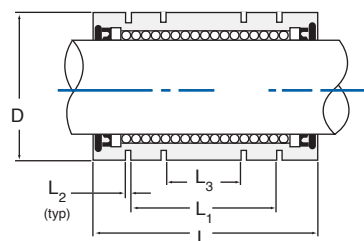


Nominal Shaft Dia.	LBB Bearing Part Number	D	L	L <sub>1</sub>	L <sub>2</sub>	Weight (lb.)	Dynamic Load (lb.)	Static Load (lb.)
1/4"	LBB-250	0.5000/0.4996	.750	.437	.040	.02	25	27
3/8"	LBB-375	0.6250/0.6246	.875	.562	.040	.04	38	36
1/2"	LBB-500	0.8750/0.8746	1.250	.875	.047	.11	88	79
5/8"	LBB-625	1.1250/1.1246	1.500	1.00	.058	.22	160	139
3/4"	LBB-750	1.2500/1.2496	1.625	1.062	.058	.26	204	191
1"	LBB-1000	1.5625/1.5621	2.250	1.625	.070	.50	371	353
1 1/4"	LBB-1250	2.0000/1.9995	2.625	1.875	.070	.91	724	712
1 1/2"	LBB-1500	2.3750/2.3745	3.000	2.250	.088	1.44	948	831
2"	LBB-2000	3.0000/2.9994	4.000	3.000	.105	2.78	1,391	1,434

**INCH - LBB PRECISION CLOSED SEALED BEARINGS**



- Designed for use on end supported PowerTrax™ HG “L” shafting
- Solid steel shell with lip seals

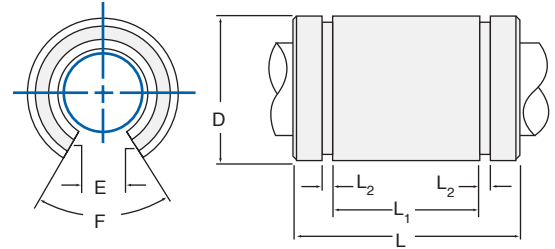


Nominal Shaft Dia.	LBB Bearing Part Number	D	L	L <sub>1</sub>	L <sub>2</sub>	L <sub>3</sub>	Weight (lb.)	Dynamic Load (lb.)	Static Load (lb.)
1/4"	LBB-250PP	0.5000/0.4996	.750	.437	.040	—	.03	25	27
3/8"	LBB-375PP	0.6250/0.6246	.875	.562	.040	—	.05	38	36
1/2"	LBB-500PP	0.8750/0.8746	1.438	.875	.047	.531	.12	88	79
5/8"	LBB-625PP	1.1250/1.1246	1.688	1.000	.058	—	.24	160	139
3/4"	LBB-750PP	1.2500/1.2496	1.875	1.062	.058	.687	.29	204	191
1"	LBB-1000PP	1.5625/1.5621	2.500	1.625	.070	.844	.52	371	353
1 1/4"	LBB-1250PP	2.0000/1.9995	3.125	1.875	.070	1.031	1.12	724	712
1 1/2"	LBB-1500PP	2.3750/2.3745	3.438	2.250	.088	1.219	1.62	948	831
2"	LBB-2000PP	3.0000/2.9994	4.750	3.000	.105	1.531	3.08	1,391	1,434

**INCH - LBB PRECISION OPEN BEARINGS**



- Designed for use on fully supported PowerTrax™ HG “L” shafting
- Longitudinal section equal to one ball circuit removed for support rail clearance.
- Solid steel shell, with no seals.

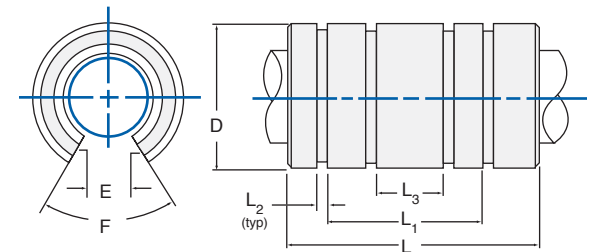


Nominal Shaft Dia.	LBB Bearing Part Number	D	L	L <sub>1</sub>	L <sub>2</sub>	E	F	Weight (lb.)	Dynamic Load (lb.)	Static Load (lb.)
1/2"	OPN-500	0.8750/0.8746	1.250	.875	.047	9/32	60°	.11	88	79
5/8"	OPN-625	1.1250/1.1246	1.500	1.000	.058	3/8	60°	.22	160	139
3/4"	OPN-750	1.2500/1.2496	1.625	1.062	.058	13/32	60°	.26	204	236
1"	OPN-1000	1.5625/1.5621	2.250	1.625	.070	9/16	60°	.50	445	438
1 1/4"	OPN-1250	2.0000/1.9995	2.625	1.875	.070	5/8	50°	.91	724	726
1 1/2"	OPN-1500	2.3750/2.3745	3.000	2.250	.088	3/4	50°	1.44	948	845
2"	OPN-2000	3.0000/2.9994	4.000	3.000	.105	1	50°	2.78	1,391	1,461

**INCH - LBB PRECISION OPEN SEALED BEARINGS**



- Designed for use on fully supported PowerTrax™ HG “L” shafting
- Longitudinal section equal to one ball circuit removed for support rail clearance.
- Solid steel shell, with lip seals.



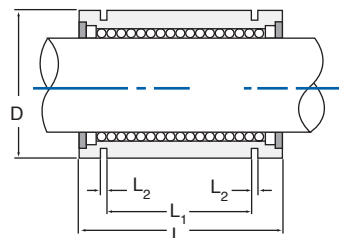
Nominal Shaft Dia.	LBB Bearing Part Number	D	L	L <sub>1</sub>	L <sub>2</sub>	L <sub>3</sub>	E	F	Weight (lb.)	Dynamic Load (lb.)	Static Load (lb.)
1/2"	OPN-500PP	0.8750/0.8746	1.438	.875	.047	.531	9/32	60°	.12	88	79
5/8"	OPN-625PP	1.1250/1.1246	1.688	1.000	.058	—	3/8	60°	.24	160	139
3/4"	OPN-750PP	1.2500/1.2496	1.875	1.062	.058	.687	13/32	60°	.29	204	236
1"	OPN-1000PP	1.5625/1.5621	2.500	1.625	.070	.844	9/16	60°	.52	445	438
1 1/4"	OPN-1250PP	2.0000/1.9995	3.125	1.875	.070	1.031	5/8	50°	1.12	724	726
1 1/2"	OPN-1500PP	2.3750/2.3745	3.438	2.250	.088	1.219	3/4	50°	1.62	948	845
2"	OPN-2000PP	3.0000/2.9994	4.750	3.000	.105	1.531	1	50°	3.08	1,391	1,461

LBB LINEAR BEARINGS TECHNICAL DATA

**INCH - LBB STAINLESS STEEL CLOSED BEARINGS**



- Designed for use on an end supported PowerTrax™ HG “SL” shafting
- Solid stainless steel shell, no seals



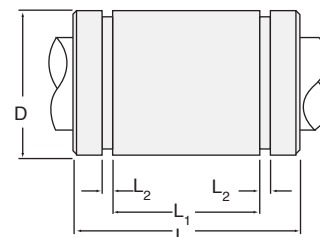
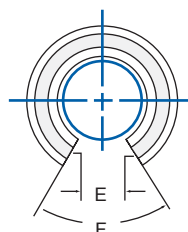
LBB LINEAR BEARINGS TECHNICAL DATA

Nominal Shaft Dia.	LBB Bearing Part Number	D	L	L <sub>1</sub>	L <sub>2</sub>	Weight (lb.)	Normal Load (lb.)	Max Load (lb.)
1/4"	LBB-250SS	0.5000/0.4996	.750	.437	.40	.02	17	25
3/8"	LBB-375SS	0.6250/0.6246	.875	.562	.404	.04	35	50
1/2"	LBB-500SS	0.8750/0.8746	1.250	.875	.047	.10	71	101
5/8"	LBB-625SS	1.1250/1.1246	1.500	1.000	.058	.22	126	179
3/4"	LBB-750SS	1.2500/1.2496	1.625	1.062	.058	.25	143	203
1"	LBB-1000SS	1.5625/1.5621	2.250	1.625	.070	.49	270	385

**INCH - LBB STAINLESS STEEL OPEN BEARINGS**



- Designed for use on a fully supported PowerTrax™ HG “SL” shafting.
- Longitudinal section equal to one ball circuit removed for support rail clearance.
- Solid stainless steel shell, no seals.



Nominal Shaft Dia.	LBB Bearing Part Number	D	L	L <sub>1</sub>	L <sub>2</sub>	E	F	Weight (lb.)	Normal Load (lb.)	Max Load (lb.)
3/8"	OPN375SS	0.6250/0.6246	.875	.562	.040	.25	60°	.04	35	50
1/2"	OPN-500SS	0.8750/0.8746	1.250	.875	.047	.28	60°	.10	71	101
5/8"	OPN-625SS	1.1250/1.1246	1.500	1.000	.058	.38	60°	.22	126	179
3/4"	OPN-750SS	1.2500/1.2496	1.625	1.062	.058	.40	60°	.25	143	203
1"	OPN-1000SS	1.5625/1.5621	2.250	1.625	.070	.56	60°	.49	270	385