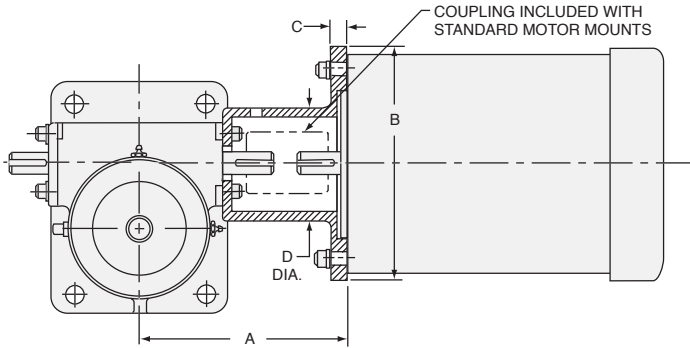


# MOTORS AND MOTOR MOUNTS

## MOTOR MOUNTS WITH AND WITHOUT BRAKEMOTORS



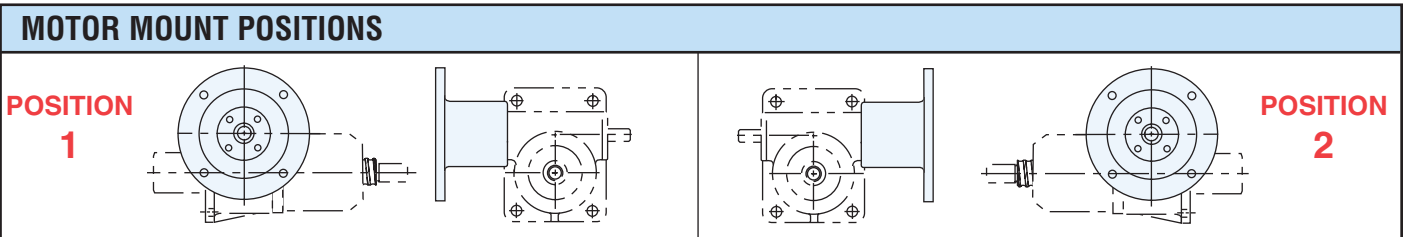
STANDARD MOTOR MOUNT SIZES & DIMENSIONS						
JACK SIZE (TONS)	NEMA FRAME SIZE	ORDER CODE WITHOUT MOTOR	DIMENSIONS			
			A	B	C	D
2.5	56C	X05	6.25	6.63	.63	3.50
	140TC	X14	6.25	6.63	.63	3.50
5	56C	X05	7.25	6.75	.56	3.75
	140TC	X14	7.25	6.75	.56	3.75
	180TC	X18	8.00	9.25	.75	3.75
10, 15	56C	X05	8.25	6.75	.50	4.38
	140TC	X14	8.25	6.75	.50	4.38
	180TC	X18	9.00	9.25	.75	4.38
20	56C	X05	8.66	6.75	.50	3.75
	140TC	X14	8.66	6.75	.50	3.75
	180TC	X18	9.00	9.25	.63	5.19
	213TC	X21	9.68	8.88	.88	5.69

ActionJac™ motor mount assemblies are designed for standard motors and include jaw type couplings. These assemblies are stocked for jack sizes 2.5, 5, 10, 15 and 20 and are available for the jack sizes listed in the table. Non-standard motor mounts can be designed for special requirements including, special couplings, small NEMA frame motors, DIN standard motors, stepper motor and servomotor designs. See page 290 for Servo Jack motor mount examples, contact Nook Industries for additional information.

Actionjac™ Worm Gear Screw Jacks can be ordered with industrial quality induction motors. Motors with internally and externally wired brake motors are available. Brake motors utilize an integral, spring actuated brake. Standard motors are 3-phase, 230-460 VAC, 60hz, 1725 rpm. Single-phase motors are 115-130 VAC, 60hz, 1725 rpm. All motors are rated for continuous duty. Specific duty motors, as wash down extended duty, may be supplied upon request.

See charts for order codes and motor mount dimensions. Additional motor mounts can be custom manufactured for other jack sizes, please contact Nook engineering.

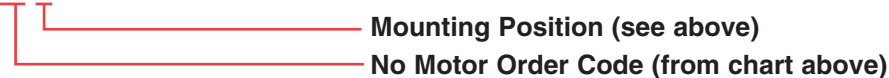
**CAUTION:** Ball Screw Jacks are self-lowering. A brake of sufficient torque is required to hold the load with a ball screw jack. Be sure to verify that the brakemotor selected has sufficient brake torque for your application.



## HOW TO ORDER A MOTOR ADAPTER WITH OR WITHOUT A BRAKEMOTOR

### EXAMPLE WITHOUT MOTOR:

2.5-BSJ-U 6:1 / **X05-1** / SSE-2 / FT / 12.0 / S



### EXAMPLE WITH MOTOR:

2.5-BSJ-U 6:1 / **10BT-1** / SSE-2 / FT / 12.0 / S

