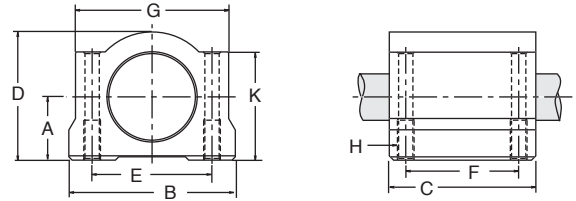


METRIC - CLOSED SINGLE PILLOW BLOCKS



- Contains a single sealed EXCEL™ Bearing.
- Designed for use on end supported PowerTrax™ HG “M” shafting.

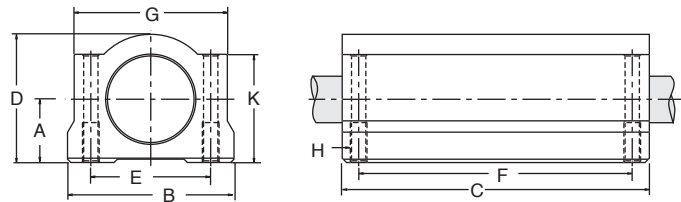


Nominal Shaft Diameter	EXCEL™ Part No.	A ±0.02	B	C	D	E ±0.02	F ±0.02	G	H (Hole)		K	Weight (kg)	LOAD RATING (N)	
									Thread	Hole Dia.			Normal	Maximum
8	XMP-08	11	34	30	22	24	18	32	M4	3.4	18	0.05	500	575
12	XMP-12	15	44	39	30	33	26	41	M5	4.3	24.5	0.09	650	750
16	XMP-16	19	50	44	38.5	36	34	46	M5	4.3	32.5	0.15	800	920
20	XMP-20	21	54	53	41	40	40	52	M6	5.2	35	0.22	1,500	1,560
25	XMP-25	26	76	67	51.5	54	50	68	M8	6.8	41	0.42	2,500	2,600
30	XMP-30	30	78	76	59.5	58	58	72	M8	6.8	49	0.58	3,200	3,300
40	XMP-40	40	102	90	78	80	60	96	M10	8.6	62	1.13	5,500	5,720
50	XMP-50	52	122	110	102	100	80	116	M10	8.6	80	2.12	8,600	8,940

METRIC - CLOSED TWIN PILLOW BLOCKS



- Contains two sealed EXCEL™ Bearings.
- Designed for use on end supported PowerTrax™ HG “M” shafting.



Nominal Shaft Diameter	EXCEL™ Part No.	A ±0.02	B	C	D	E ±0.02	F ±0.02	G	H (Hole)		K	Weight (kg)	LOAD RATING (N)	
									Thread	Hole Dia.			Normal	Maximum
8	TMP-08	11	34	58	22	24	42	32	M4	3.4	18	0.10	1,000	1,150
12	TMP-12	15	44	77	30	33	64	41	M5	4.3	24.5	0.18	1,300	1,040
16	TMP-16	19	50	89	38.5	36	79	46	M5	4.3	32.5	0.30	1,600	1,260
20	TMP-20	21	54	106	41	40	90	52	M6	5.2	35	0.43	3,000	2,500
25	TMP-25	26	76	136	51.5	54	119	68	M8	6.8	41	0.85	5,000	4,400
30	TMP-30	30	78	154	59.5	58	132	72	M8	6.8	49	1.17	6,400	5,600
40	TMP-40	40	102	180	78	80	150	96	M10	8.6	62	2.26	11,000	9,800
50	TMP-50	52	122	230	102	100	200	116	M10	8.6	80	4.38	17,200	14,200