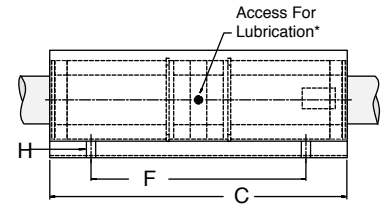
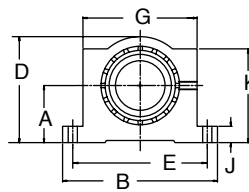


EXCEL™ INCH SELF-ALIGNING BEARINGS AND PILLOW BLOCKS TECHNICAL DATA

INCH - CLOSED TWIN PILLOW BLOCKS



- Sealed at both ends, contains two closed unsealed EXCEL™ Bearings.
- Designed for use on end supported PowerTrax™ HG “L” shafting.



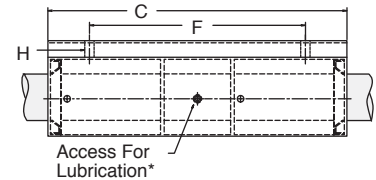
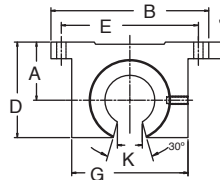
* Lubrication holes for blocks up to 1/2" have flush lube fitting; 5/8" and above are 1/4 – 28 tapped hole with set screw

Nominal Shaft Dia.	EXCEL™ Part No.	A ±0.001	B	C	D	E ±0.005	F ±0.005	G	H		J	K	Weight lbs.	Dynamic Load (lb.)		Static Load (lb.)	
									Bolt	Hole				Normal	Maximum	Normal	Maximum
3/8"	TEP-06	0.500	1 3/4"	2 3/4"	1 5/16"	1.437	2.250	1 1/8"	#6	0.17	3/16"	7/8"	0.25	118	136	86	122
1/2"	TEP-08	0.687	2"	3 1/2"	1 1/4"	1.688	2.500	1 3/8"	#6	0.17	1/4"	1 1/8"	0.40	304	350	224	316
5/8"	TEP-10	0.875	2 1/2"	4"	1 5/8"	2.125	3.000	1 3/4"	#8	0.19	9/32"	1 7/16"	1.00	546	650	374	546
3/4"	TEP-12	0.937	2 3/4"	4 1/2"	1 3/4"	2.375	3.500	1 7/8"	#8	0.19	5/16"	1 9/16"	1.20	766	812	548	702
1"	TEP-16	1.187	3 1/4"	6"	2 3/16"	2.875	4.500	2 3/8"	#10	0.22	3/8"	1 15/16"	2.40	1368	1450	984	1260
1 1/4"	TEP-20	1.500	4"	7 1/2"	2 13/16"	3.500	5.500	3"	#10	0.22	7/16"	2 1/2"	5.00	2034	2156	1424	1822
1 1/2"	TEP-24	1.750	4 3/4"	9"	3 1/4"	4.125	6.500	3 1/2"	1/4"	0.28	1/2"	2 7/8"	7.80	2596	2752	1704	2182
2"	TEP-32	2.125	6"	10"	4 1/16"	5.250	8.250	4 1/2"	3/8"	0.41	5/8"	3 5/8"	14.50	4208	4460	2916	3732

INCH - OPEN TWIN PILLOW BLOCKS



- Sealed at both ends, contains two open, sealed EXCEL™ Bearings.
- Designed for use with fully supported PowerTrax™ HG “L” shafting.
- Longitudinal section equal to one ball circuit removed for support rail clearance.



* Lubrication holes for blocks up to 1/2" have flush lube fitting; 5/8" and above are 1/4 – 28 tapped hole with set screw

Nominal Shaft Dia.	EXCEL™ Part No.	A ±0.001	B	C	D	E ±0.005	F ±0.005	G	H		J	K	Weight lbs.	Dynamic Load (lb.)		Static Load (lb.)	
									Bolt	Hole				Normal	Maximum	Normal	Maximum
1/2"	TEP-08-OPN	0.687	2"	3 1/2"	1.13	1.688	2.500	1 3/8"	#6	0.17	1/4"	5/16"	0.40	304	304	224	224
5/8"	TEP-10-OPN	0.875	2 1/2"	4"	1.44	2.125	3.000	1 3/4"	#8	0.19	9/32"	3/8"	0.80	630	636	458	472
3/4"	TEP-12-OPN	0.937	2 3/4"	4 1/2"	1.56	2.375	3.500	1 7/8"	#8	0.19	5/16"	7/16"	1.00	772	796	558	624
1"	TEP-16-OPN	1.187	3 1/4"	6"	1.94	2.875	4.500	2 3/8"	#10	0.22	3/8"	9/16"	2.00	1380	1422	1002	1122
1 1/4"	TEP-20-OPN	1.500	4"	7 1/2"	2.50	3.500	5.500	3"	#10	0.22	7/16"	5/8"	4.20	2050	2112	1452	1626
1 1/2"	TEP-24-OPN	1.750	4 3/4"	9"	2.88	4.125	6.500	3 1/2"	1/4"	0.28	1/2"	3/4"	6.70	2614	2692	1734	1942
2"	TEP-32-OPN	2.125	6"	10"	3.63	5.250	8.250	4 1/2"	3/8"	0.41	5/8"	1"	12.50	4242	4370	2970	3326

* DO NOT exceed 1/2 of rated values when load is applied through the bearing opening.

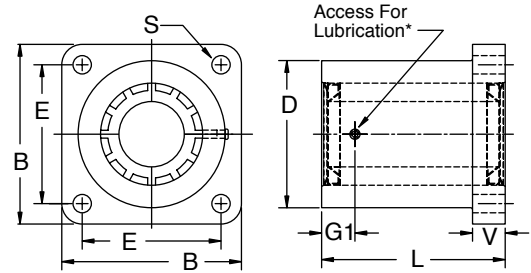
INCH - FLANGE-MOUNT SINGLE AND TWIN PILLOW BLOCKS

EXCEL™ Linear Bearings provide high efficiency and smooth operation in a variety of linear guidance applications. EXCEL™ Flange-Mount Pillow Blocks offer an installation alternative to standard foot-mount pillow blocks when the mounting surface is perpendicular to the guide shafts. Nook Industries flanged mount pillow blocks are available in both single and twin bearing

styles and include 1/2 , 3/4 or 1 inch EXCEL™ Linear Bearings. The blocks have integral lip seals, an aluminum housing and a lubrication port. Typical applications include: platform guidance, end stop support, conveyor width adjust mechanisms, edge guides and machine operator guards.



- Sealed at both ends, contains unsealed EXCEL™ Bearing (two bearings in twin).
- Designed for use on end supported PowerTrax™ HG "L" shafting.



	Nominal Shaft Dia.	EXCEL™ Part No.	B	E ±0.005	L	D	V	G1	S Hole Dia.	DYNAMIC LOAD (lb.)		STATIC LOAD (lb.)	
										Normal	Maximum	Normal	Maximum
SINGLE	1/2"	XEP-08-FLM	1.63	1.250	1.69	1.25	0.25	0.35	0.19	152	175	112	158
	3/4"	XEP-12-FLM	2.38	1.750	2.06	1.75	0.38	0.37	0.22	383	406	274	351
	1"	XEP-16-FLM	2.75	2.125	2.81	2.25	0.50	0.51	0.28	684	725	492	630
Thread													
TWIN	1/2"	TEP-08-FLM	1.63	1.250	3.20	1.25	0.90	1.60	1/4-20	304	350	224	316
	3/4"	TEP-12-FLM	2.38	1.750	3.95	1.75	0.90	1.60	1/4-20	766	812	548	702
	1"	TEP-16-FLM	2.75	2.125	5.33	2.25	0.90	2.70	5/16-18	1368	1450	984	1260

