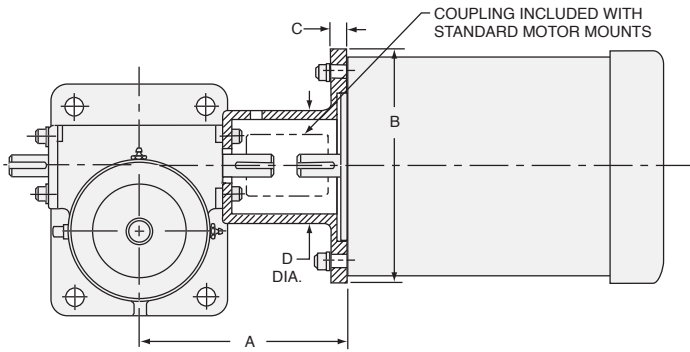


MOTOR MOUNTS WITH AND WITHOUT BRAKEMOTORS

ELECTRIC CYLINDER ACCESSORIES



ActionJac™ motor mount assemblies are designed for standard motors and include jaw type couplings. These assemblies are stocked for DD-25, DD-50, DD-100 and DD-200 and are available for the cylinder sizes listed in the table. Non-standard motor mounts can be designed for special requirements including, special couplings, small NEMA frame motors, DIN standard motors, stepper motor and servomotor designs, contact Nook Industries for additional information.

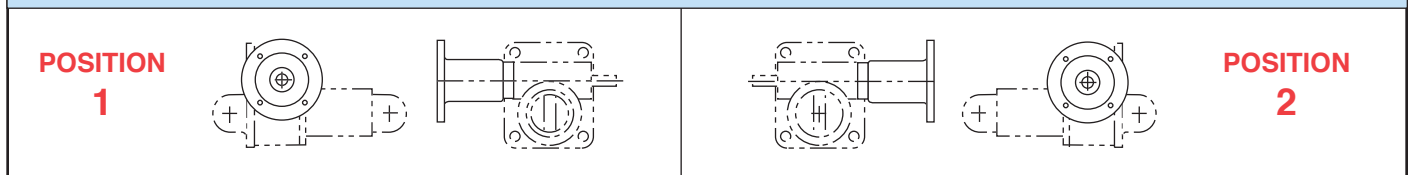
STANDARD MOTOR MOUNT SIZES & DIMENSIONS						
CYLINDER SERIES	NEMA FRAME SIZE	ORDER CODE WITHOUT MOTOR	DIMENSIONS			
			A	B	C	D
DD-5	42	X02	4.48	4.63	.50	2.69
	48	X04	4.48	4.63	.50	3.12
DD-10	56C	X05	5.71	6.63	.49	3.12
DD-25	56C	X05	6.25	6.63	.63	3.50
	140TC	X14	6.25	6.63	.63	3.50
DD-50	56C	X05	7.25	6.75	.56	3.75
	140TC	X14	7.25	6.75	.56	3.75
	180TC	X18	8.00	9.25	.75	3.75
DD-100	56C	X05	8.25	6.75	.50	4.38
	140TC	X14	8.25	6.75	.50	4.38
	180TC	X18	9.00	9.25	.75	4.38
DD-200	56C	X05	8.66	6.75	.50	3.75
	140TC	X14	8.66	6.75	.50	3.75
	180TC	X18	9.00	9.25	.63	5.19
	213TC	X21	9.68	8.88	.88	5.69

ActionJac™ electric cylinders can be ordered with industrial quality induction motors. Motors with internally and externally wired brake motors are available. Brake motors utilize an integral, spring actuated brake. Standard motors are 3-phase, 230-460 VAC, 60hz, 1725 rpm. Single-phase motors are 115-130 VAC, 60hz, 1725 rpm. All motors are rated for continuous duty. Specific duty motors, as wash down extended duty, may be supplied upon request.

See charts on page 377 for order codes.

CAUTION: Ball screw cylinders are self-lowering. A brake of sufficient torque is required to hold the load with a ball screw cylinder. Be sure to verify that the brakemotor selected has sufficient brake torque for your application.

MOTOR MOUNT POSITIONS



HOW TO ORDER A MOTOR ADAPTER WITH OR WITHOUT A BRAKEMOTOR

EXAMPLE:

DD-1008-HD / **10BT-1** / 000-1 / CC / 24.0 / S

————— Mounting Position (see above & for Right Angle Reducer see page 378)

————— Order Code for No Motor (see chart above)

See page 377 for Order Code with Motor

ActionJac Electric Cylinders can be supplied with industrial quality brake motors. Brake motors include a spring actuated, electrically released braking mechanism which will hold a load when the power is off. In normal operation, power is applied and removed to the motor windings and brake release simultaneously.

If it is desired to operate the brake separately, as when used with a speed control, the brake needs to be wired

externally. Standard for Reliance motors, special order for Baldor motors.

Standard motors are: 3 phase, 208-230 / 460 VAC, 60 Hz. 1725 rpm. Also available are single phase motors at: 115 / 230 VAC, 60 Hz. 1725 rpm. All motors are rated for continuous duty. Note: for inverter duty motors or additional options, contact Nook Industries.

BALDOR: INTERNALLY WIRED BRAKE MOTOR ORDER CODE

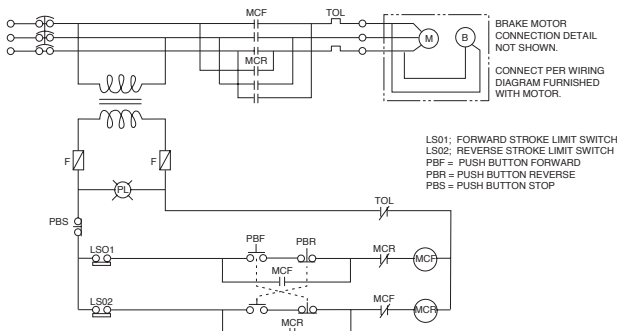
MOTOR HP	STD. MOTOR 208-230/460 3PH	SINGLE PHASE 115/230 1PH	XT EXTRA TUFF 208-230/460 3PH	WASH DOWN MOTOR IP55 208-230/460 3PH	EXPLOSION PROOF • DIVISION 1 • CLASS 1,2 • GROUP F & G • 208/230/460 • 3PH
1/4	02BT	02BS	02BX	02BW	02BE
1/3	03BT	03BS	03BX	03BW	03BE
1/2	05BT	05BS	05BX	05BW	05BE
3/4	07BT	07BS	07BX	07BW	07BE
1	10BT	10BS	10BX	10BW	10BE
1-1/2	15BT	-	15BX	15BW	15BE
2	20BT	-	20BX	20BW	20BE
3	30BT	-	30BX	30BW	30BE
5	50BT	-	50BX	50BW	50BE
7-1/2	75BT	-	75BX	75BW	-

RELIANCE: EXTERNALLY WIRED BRAKE MOTOR ORDER CODE

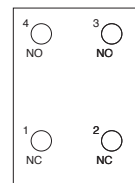
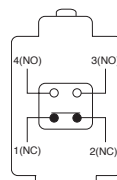
MOTOR HP	STD. MOTOR 208-230/460 3PH	SINGLE PHASE 115/230 1PH	XT EXTRA TUFF 208-230/460 3PH	WASH DOWN MOTOR IP55 208-230/460 3PH	EXPLOSION PROOF • DIVISION 1 • CLASS 1,2 • GROUP F & G • 208/230/460 • 3PH
1/4	02RT	02RS	02RX*	02RW*	02RE*
1/3	03RT	03RS	03RX*	03RW*	03RE*
1/2	05RT	05RS	05RX*	05RW	05RE
3/4	07RT	07RS	07RX*	07RW	07RE
1	10RT	10RS	10RX*	10RW	10RE
1-1/2	15RT	-	15RX*	15RW	15RE
2	20RT	-	20RX*	20RW	20RE
3	30RT	-	30RX*	30RW*	30RE
5	50RT	-	50RX*	50RW*	50RE
7-1/2	75RT*	-	75RX*	75RW*	75RE*

*specify minimum quantity required

BRAKE MOTOR WIRING

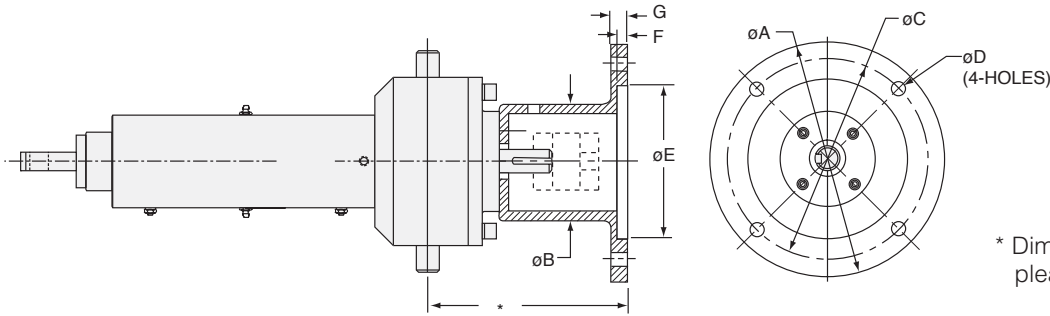


A typical wiring drawing is shown here, for a three-phase brake motor. This example is for reference only, the correct wiring will vary for each application.



CONTACT CONFIGURATION

TERMINAL ARRANGEMENT



* Dimension is application dependent, please contact factory.

Actionjac™ ILA Series cylinders can be supplied with motor mounts. The sizes listed in the chart are mounts designed to match up to common motor faces. Application torque requirements and coupling size, style and attachment method will affect the size of the motor mount. See reference number page 376-377 for motor mount/cylinder model availability. A custom motor mount can be manufactured to your specifications, please contact Nook Industries.

MODEL	NEMA FRAME MOTOR SIZE	øA	øB	øC	øD	øE	F	G
ILA-5	48	4.63	3.12	3.75	.28	3.00	.16	.50
	48	4.63	3.12	3.75	.28	3.00	.16	.50
ILA-10	56C	6.75	3.50	5.88	.41	4.50	.16	.50
ILA-25	56C	6.75	3.75	5.88	.41	4.50	.16	.50
	140TC	6.75	3.75	5.88	.41	4.50	.16	.50
	180TC	9.25	3.75	7.25	.56	8.50	.28	.75
ILA-100	56TC	6.75	4.38	5.88	.41	4.50	.16	.50
	140TC	6.75	4.38	5.88	.41	4.50	.16	.50
	180TC	9.25	4.38	7.25	.56	8.50	.28	.75
ILA-200	180TC	9.25	5.19	7.25	.56	8.50	.28	.75
	213TC	8.88	5.69	7.25	.56	8.50	.28	.88

Dimensions in inches

Other NEMA and Custom Frame Motor Sizes available upon request.

MODEL	IEC FRAME MOTOR SIZE	øA	øB	øC	øD	øE	F	G
ILA-5	56B5	120	64	100	8.5	80	3.5	7
	56B14	80	64	65	6	50	3.0	6
ILA-10	63B5	140	70	115	9	95	4	8
	63B14	90	70	75	6	60	3.5	8
	71B5	160	85	130	9	110	4.5	10
	71B14	105	85	85	7	70	4	10
ILA-25	71B5	160	85	130	9	110	4.5	10
	71B14	105	85	85	7	70	4	10
	80B5	200	85	165	11	130	4.5	12
	80B14	120	85	100	7	80	4	12
ILA-100	80B5	200	96	165	11	130	4.5	12
	80B14	120	96	100	7	80	4	12
	90B5	200	116	165	11	130	4.5	12
	90B14	140	116	115	9	95	4.5	12
	100B5	250	116	215	13	180	5	14
	100B14	160	116	130	9	110	5	14
ILA-200	100B5	250	134	215	13	180	5	14
	100B14	160	134	130	9	110	5	14

Dimensions in mm
Other IEC Motor Sizes
available upon request.